

# Public Document Pack



## COUNCIL

**16 OCTOBER 2019**

### SUPPLEMENTARY AGENDA

#### **PART 1**

#### **13. REVIEW OF PARLIAMENTARY POLLING DISTRICTS AND POLLING PLACES 2019 - OUTCOME OF REVIEW**

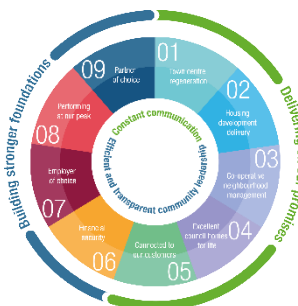
To consider a report regarding the outcome of the Parliamentary Polling Districts  
and Polling Places Review 2019.

Pages 3 - 72

Supplementary Agenda Published 8 October 2019

This page is intentionally left blank

**Meeting:** COUNCIL  
**Date:** 16 OCTOBER 2019



## REVIEW OF PARLIAMENTARY POLLING DISTRICTS AND POLLING PLACES 2019 – OUTCOME OF REVIEW

Author – Luke Fattorusso ext. 2174  
Lead Officer – Matt Partridge ext. 2225  
Contact Officer – ext. 2174

### 1. PURPOSE

- 1.1 This report sets out the steps taken in the 2019 review of Parliamentary Polling District and Places and the outcome of that review, which complies with the relevant statutory obligations.
- 1.2 Under the Electoral Registration and Administration Act 2013 we are required to conduct a review of all Parliamentary Polling Districts and Polling Places in the Borough every five years.

### 2. RECOMMENDATIONS

- 2.1 That the proposals for Polling Districts and Polling Places in the Borough, as set out in Appendix A, be adopted.

### 3. BACKGROUND

- 3.1 In compliance with Section 17 of the Electoral Registration and Administration Act 2013 (review of polling districts and places in Great Britain), the statutory responsibility for reviewing Parliamentary Polling Districts and Places in England and Wales rests with each relevant local

authority for so much of any constituency as is situated in its area. The Authority must have undertaken and completed a review of all Parliamentary Polling Districts and Places in its area within 16 months, commencing 1 October 2018 (i.e. by 31 January 2020). To be effective for the Revised Register of Electors to be published on 1 December 2019 the review had to be completed in time for Council to consider any proposals on 16 October 2019.

- 3.2 Following this review a further review will need to take place within the period of 16 months commencing on 1 October every fifth year thereafter. Accordingly the next review will commence on 1 October 2023. However, the Council is not prevented from carrying out a review of all or some of the polling districts and places in its area at other times.
- 3.3 A **Polling District** is a geographical area created by a sub-division of a UK Parliamentary constituency for the purposes of a UK Parliamentary election. In England, each parish is to be a separate polling district (unless there are special circumstances). The Council is responsible for dividing its area into polling districts and for keeping these under review.
- 3.4 A **Polling Place** is a geographical area in which polling stations will be selected. A polling place within a polling district must be designated so that polling stations are in close proximity to all electors in the polling district. It is possible to designate an entire polling district as the polling place and it is also possible to designate it more tightly (such as a particular building). The Council must designate a polling place for every polling district unless the size or other circumstances of the polling district are such that the location of the polling stations does not materially affect the convenience of the electorate. The designated polling place must be within the area of the polling district unless special circumstances make it desirable to designate an area wholly or partly outside of the polling district.
- 3.5 A **Polling Station** is the room or area in which the voting takes place. This must be located within the polling place that has been designated for the particular polling district. In some cases there is more than one polling station within a polling place, dependent upon how many people vote there. Unlike Polling Districts and Polling Places, polling stations are chosen by the relevant Returning Officer for the election.
- 3.6 In addition to the above, Local Authorities must comply with the following access requirements;
- (a) seek to ensure that all electors in a constituency in the local authority area have such reasonable facilities for voting as are practicable in the circumstances; and
- (b) seek to ensure that so far as is reasonable and practicable every polling place for which it is responsible is accessible to electors who are disabled.

- 3.7 The Council must give notice of holding a review, which requires publication in the Council's Office, in at least one conspicuous place within the Council's area, and on the Council's website. Such notice was given for this review.
- 3.8 The content of the Notice is not prescribed, but it would include key information such as the timetable of the review, that it welcomes responses and suggested alternatives, where documents can be inspected and who to make representations to.
- 3.9 The Council is required to consult the Acting Returning Officer for every parliamentary constituency that is wholly or partly within its area.
- 3.10 In respect to any representations from the Acting Returning Officer received, the Borough Council would be required to publish the said representations within thirty calendar days of their receipt, as a minimum.
- 3.11 In reviewing polling districts and polling places, the Council is required to actively seek representations from such persons as it thinks have particular expertise in relation to access to premises or facilities for persons who have different forms of disability. Such persons must be given the opportunity to make representations and to comment on the representations made by the Returning Officer.
- 3.12 A key factor the Council considered at the outset of the review was the identification of those persons/organisations it feels have particular expertise in accessibility issues. In addition, any elector in the constituency may make representations on the designation of polling places to the Council.
- 3.13 On completion of a review, the Council is required to give reasons for its decisions in respect of the designation of both polling districts and polling places. In addition, the Council must publish the following:
- - all correspondence sent to a Returning Officer in connection with the review, and all correspondence sent to any person whom the authority thinks has particular expertise in relation to access to premises or facilities for persons who have different forms of disability;
  - all representations made by any person in connection with the review;
  - the minutes of any meetings held by the authority where details of the review have been considered;
  - details of the actual designations of polling districts and polling places agreed as a result of the review; and
  - details of where the results of the review have been published.
- 3.14 Although this review concerns itself explicitly with the review of Parliamentary Polling Districts and Places in the Borough, it is normally the case that Local Government Polling Districts and Places will be modified to accommodate and mirror the same Polling Districts and Places as will apply to Parliamentary constituencies. The principal exception to this rule would be if the proposed Polling Place was outside of the electoral area concerned.

- 3.15 Although the Electoral Commission has no role in the review process itself, it has an extremely important role in respect of considering representations and observations made that a council has not conducted a review so as to:
- Meet the reasonable requirements of the electors in the constituency, or a body of them (i.e. the reasonable requirements of a particular area of the Authority have not been satisfactorily met); or
  - Take sufficient account of the accessibility to disabled persons of polling stations within a designated polling place.
- 3.16 It should be noted that, as detailed in the final proposals set out at Appendix A, that this Review has considered the latest housing trajectory forecasts, following data provided by the Borough Council Planning Group on future residential developments within the Borough.
- 3.17 The proposals for Polling Districts and Places, identified by Parliamentary Constituency and Borough Ward are available at the following link:  
[www.stevenage.gov.uk/polling-district-review](http://www.stevenage.gov.uk/polling-district-review)
- 3.18 The revised Register for Electors is to be published on 1 December 2019 and will be prepared on the basis of the new Polling Districts and Places, if approved by the Council on 16 October 2019.
- 3.19 Should a by-election be called prior to 1 December 2019 these arrangements would not be in force.
- 3.20 The number of Polling Districts proposed across the Borough totals 41. This is an increase of three from the current arrangements (which have 38 Polling Districts).

#### **4. REASONS FOR RECOMMENDED COURSE OF ACTION AND OTHER OPTIONS**

- 4.1 The Council is under a duty to conduct this review and it must be concluded by 31 January 2020. The next publication date for the Revised Register of Electors is 1 December 2019 and this is an appropriate point to adopt the new Polling Districts and Polling Places following the conclusion of the review, as the register can then be published taking account of any changes arising from the review.
- 4.2 The proposals are set out in Appendix A of this report.
- 4.3 The proposals were available on the Council's website or could be inspected at the Council's offices. Each of the groups listed below were sent a schedule of draft proposals of Polling District and Polling Places. Responses were to be received no later than 2 September 2019:
- Members of Stevenage Borough Council
  - Members of Hertfordshire County Council for the Divisions within the Borough of Stevenage

- Member of Parliament for Stevenage Constituency
- Members of the European Parliament for the Eastern Region
- Local Constituency Parties/Associations for registered political parties
- The Acting Returning Officers for Stevenage Constituency
- Age Concern
- Invisibility
- SPACE
- Crossroads
- Phoenix
- Stevenage Resource Centre

4.4 The responses received are set out at Appendix B. Some of the comments received related to the venues used for Polling Stations which are outside of the scope of the review but have been included to assist Council in its consideration of the appropriate Polling Districts and Polling Places.

#### **Financial Implications**

4.5 The review has been accommodated within existing resources.

#### **Legal Implications**

4.6 Section 17 of the Electoral Registration and Administration Act 2013 amended the timetable for which Polling District and Places reviews are undertaken. Section 17 of the 2013 Act requires that a Polling District and Places review is undertaken within 16 months commencing on 1 October 2018. Section 16 of the Electoral Administration Act 2006 sets out the legal framework of the review.

#### **Risk Implications**

4.7 The principal risk associated with the review is that it is not completed as required by law. The setting of a timetable and identification of specific groups of consultees was designed to mitigate against that risk.

#### **Equalities and Diversity Implications**

4.8 In preparing this report, due consideration has been given to the Council's statutory Equality Duty to eliminate unlawful discrimination, advance equality of opportunity and foster good relations, as set out in Section 149(1) of the Equality Act 2010.

## **BACKGROUND DOCUMENTS**

- BD1 Published Notice of the Review  
([http://www.stevenage.gov.uk/content/15953/28832/219359/Notice\\_of\\_Review\\_of\\_Polling\\_Districts\\_and\\_Polling\\_Places.pdf](http://www.stevenage.gov.uk/content/15953/28832/219359/Notice_of_Review_of_Polling_Districts_and_Polling_Places.pdf))
- BD2 Copy of correspondence sent to those listed in the Report

## **APPENDICES**

- A Proposals for Polling Districts and Polling Places
- B Responses to Consultation



## **POLLING DISTRICT AND POLLING PLACES REVIEW 2019**

### **STEVENAGE CONSTITUENCY**

#### **BANDLEY HILL WARD**

The map of Bandley Hill Ward is available on the following page. The Ward has two Polling Districts. Details of the reference letters and electorate are set out below:

#### **POLLING DISTRICTS AND STATISTICAL DATA**

Polling District	Electoral Division	Properties	Electors	In Person Voters	Postal Voters
CLA	Shephall	1296	2502	1805	697
CLB	Shephall	1520	2663	1696	967

#### **POLLING PLACES**

Polling District	Polling Place	Envisaged Polling Station for the next scheduled election
CLA	CLA	Bandley Hill Play Centre, Featherston Road, SG2 9PP
CLB	CLB	Stevenage Scouts HQ, Magpie Crescent, SG2 9RZ

#### **POTENTIAL DEVELOPMENTS**

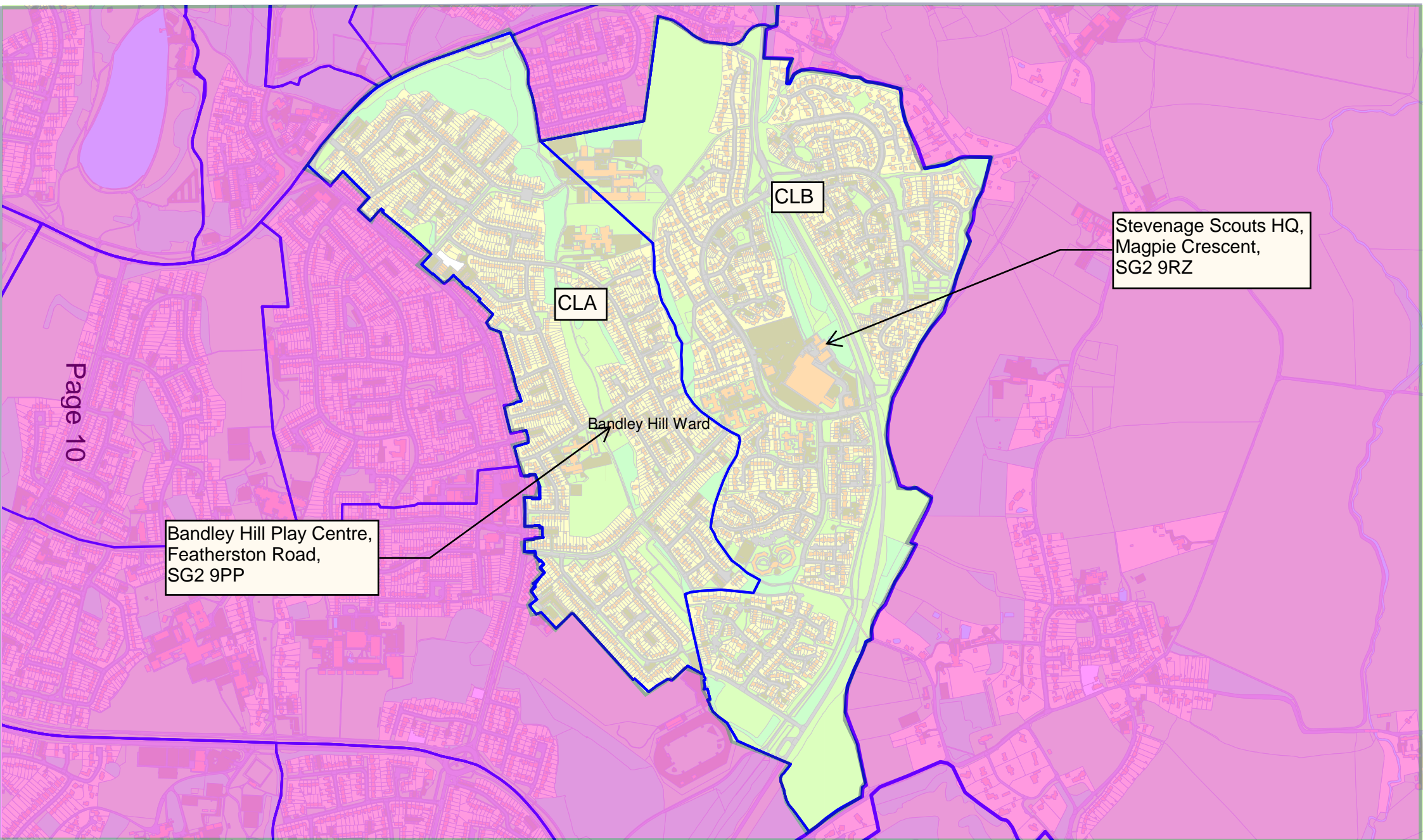
There are no developments within the Ward that are expected to impact on the allocation of Polling Districts and Places.

#### **COMMENTS RECEIVED**

Comments were received from the Stevenage Liberal Democrats who had no objections to the draft proposals.

There are no amendments from the draft proposals to those in these final proposals.

# Stevenage Constituency - Bandle Hill Borough Ward



Page 10

Bandley Hill Play Centre,  
Featherston Road,  
SG2 9PP

CLA

CLB

Stevenage Scouts HQ,  
Magpie Crescent,  
SG2 9RZ

Bandle Hill Ward

Polling District and Places Review 2019 -  
The Polling District designatory letters are shown in a black bordered white edged box. The boundaries are shown edged in blue.

## **POLLING DISTRICT AND POLLING PLACES REVIEW 2019**

### **STEVENAGE CONSTITUENCY**

#### **BEDWELL WARD**

The map of Bedwell Ward is available on the following page. The Ward has four Polling Districts. Details of the reference letters and electorate information are set out below:

#### **POLLING DISTRICTS AND STATISTICAL DATA**

Polling District	Electoral Division	Properties	Electors	In Person Voters	Postal Voters
CJA	Bedwell	1076	1992	1397	595
CJB	Bedwell	1054	1850	1281	569
CJC	Bedwell	829	1107	787	320
CJD	Broadwater	591	555	387	168

#### **POLLING PLACES**

Polling District	Polling Place	Envisaged Polling Station for the next scheduled election
CJA	CJA	Bedwell Community Centre, Bedwell Crescent, SG1 1NA
CJB	CJB	Broom Barns JMI School, Homestead Moat, SG1 1UE
CJC	CJC	Friends Meeting House, Cuttys Lane, SG1 1UP
CJD	CJD & CJC	Daneshill House, Danestrete, SG1 1HN

#### **POTENTIAL DEVELOPMENTS**

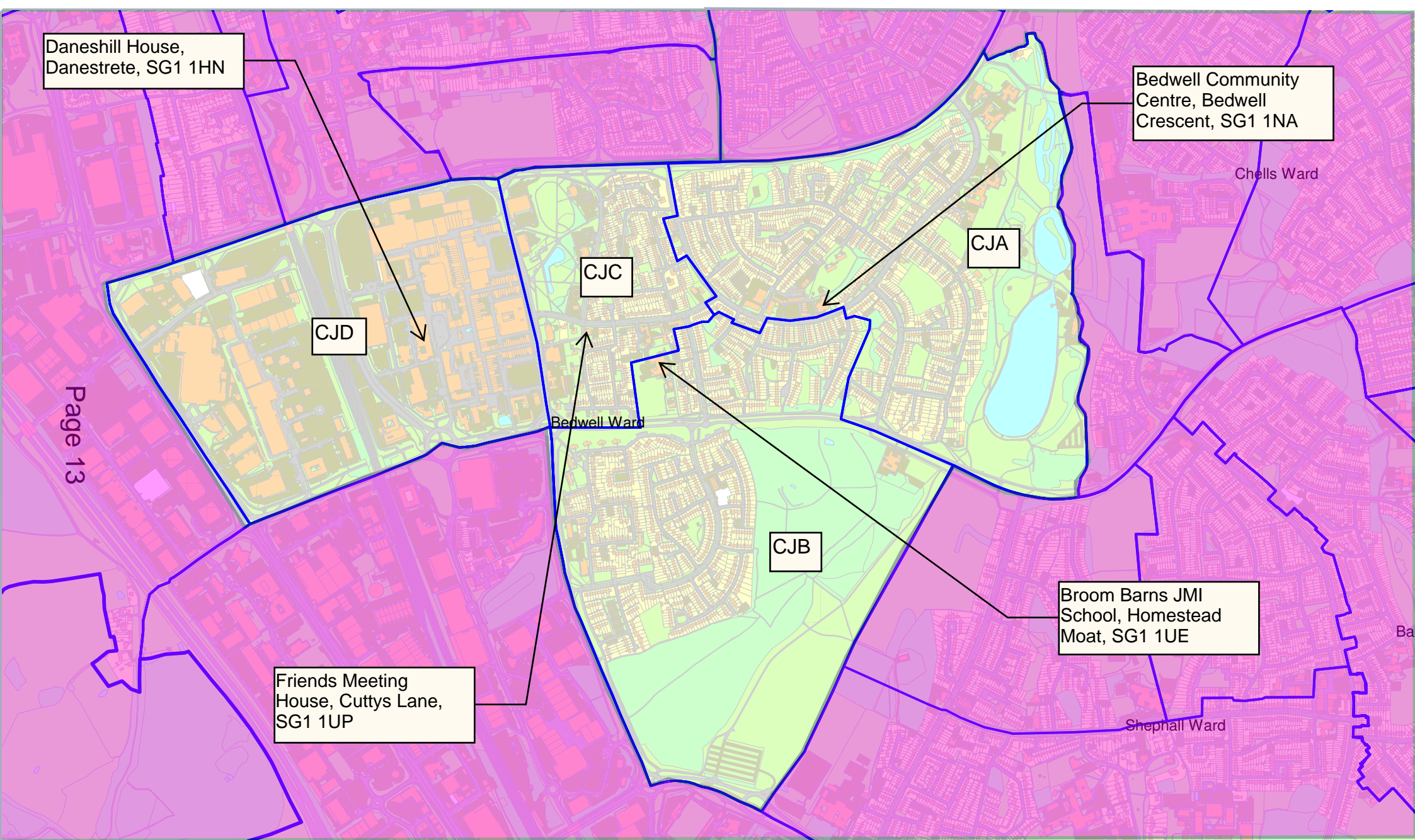
To accommodate the developments within the town centre over the next five years a polling station has been identified for voters in Polling District CJD.

## **COMMENTS RECEIVED**

Comments were received from the Stevenage Liberal Democrats who had no objections to the draft proposals and further commented that it would be easier for residents living in the Town Centre to access the Polling Station at Daneshill House in many cases without the need to drive or attempt to cross St George's Way.

There are no amendments from the draft proposals to those in these final proposals.

# Stevenage Constituency - Bedwell Borough Ward



Page 13

Polling District and Places Review 2019 -  
The Polling District designatory letters are shown in a black bordered white edged box. The boundaries are shown edged in blue

This page is intentionally left blank

## **POLLING DISTRICT AND POLLING PLACES REVIEW 2019**

### **STEVENAGE CONSTITUENCY**

#### **CHELLS WARD**

The map of Chells Ward is available on the following page. The Ward has four Polling Districts. Details of the reference letters and electorate information are set out below:

#### **POLLING DISTRICTS AND STATISTICAL DATA**

Polling District	Electoral Division	Properties	Electors	In Person Voters	Postal Voters
CHA	Chells	951	1692	1098	594
CHB	Chells	1300	2382	1571	811
CHC	Shephall	269	449	329	120
CHD	Shephall	224	461	242	219

#### **POLLING PLACES**

Polling District	Polling Place	Envisaged Polling Station for the next scheduled election
CHA	CHA	St Hugh & St John Shared Church, Mobbsbury Way, SG2 0LT
CHB	CHB	Camps Hill Primary School, Chells Way, SG2 0LT
CHC	CHC, CHA & CHB	St Hugh & St John Shared Church, Mobbsbury Way, SG2 0LT
CHD	CHD & CHB	Camps Hill Primary School, Chells Way, SG2 0LT

#### **POTENTIAL DEVELOPMENTS**

There are no developments within the Ward that are expected to impact on the allocation of Polling Districts and Places.

## **COMMENTS RECEIVED**

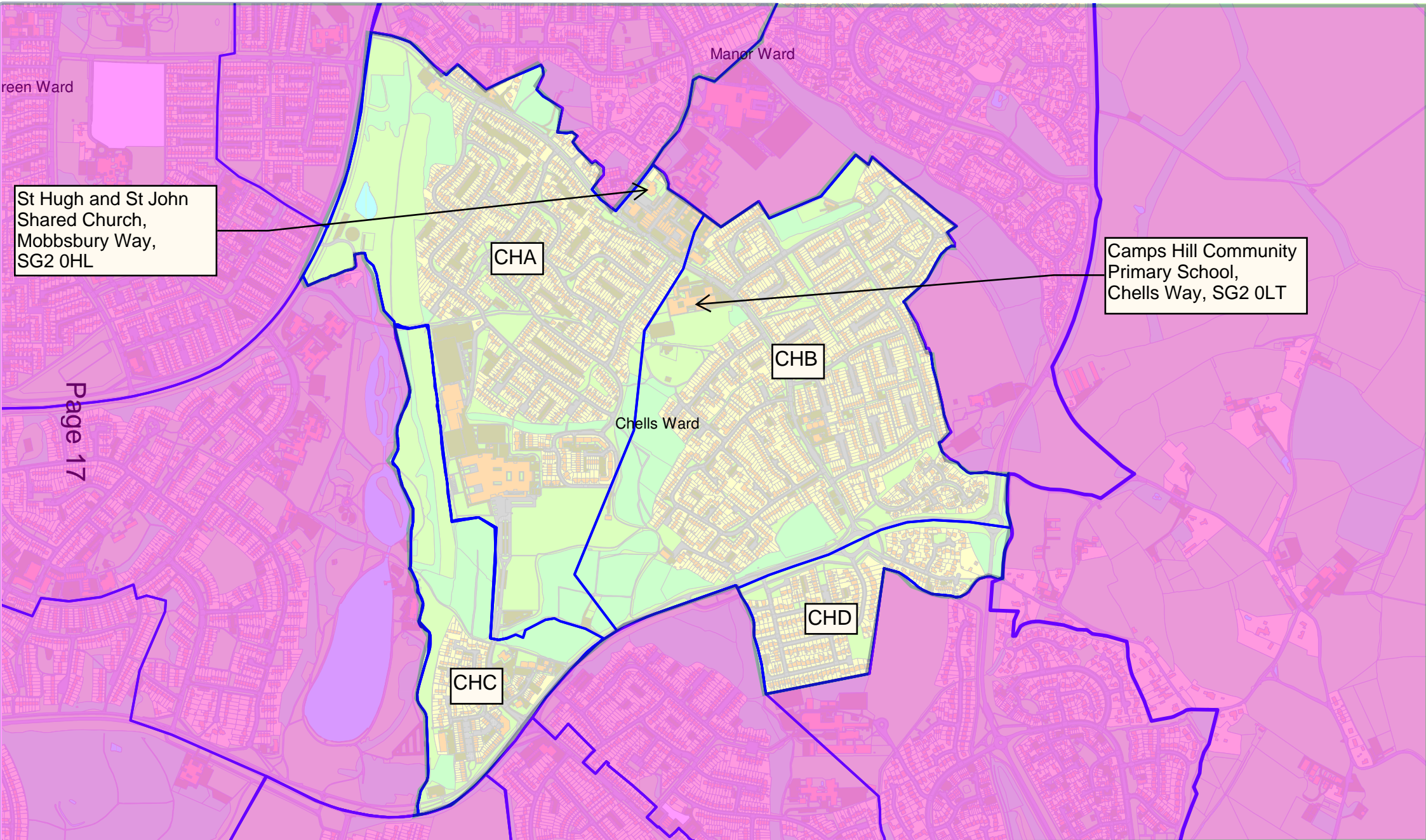
Comments were received from the Stevenage Liberal Democrats who welcomed the allocation of a new polling station for voters in Polling District CHC. They also had no objections to the use of St Hugh & St John Shared Church for voters in Polling District CHA.

Comments were also received from two individuals who objected to the use of Camps Hill Primary School as a polling station. The reasons included the potential disruption for parents who have to take time off to look after their children. Hertfordshire County Council, working with Returning Officers, are proactive in contacting schools in advance of an election to work through how best to accommodate arrangements on Polling Day, including encouraging schools to allocate Polling Day as a staff training day.

There are no amendments from the draft proposals to those in these final proposals.



# Stevenage Constituency - Chells Borough Ward



Polling District and Places Review 2019 -

The Polling District designatory letters are shown in a black bordered white edged box. The boundaries are shown edged in blue

This map is produced by Stevenage Borough Council. Crown copyright and database rights 2018 100024285

This page is intentionally left blank

## **POLLING DISTRICT AND POLLING PLACES REVIEW 2019**

### **STEVENAGE CONSTITUENCY**

#### **LONGMEADOW WARD**

The map of Longmeadow Ward is available on the following page. The Ward has two Polling Districts. Details of the reference letters and electorate information are set out below:

#### **POLLING DISTRICTS AND STATISTICAL DATA**

Polling District	Electoral Division	Properties	Electors	In Person Voters	Postal Voters
CNA	Broadwater	1517	2741	1850	891
CNB	Broadwater	1005	1729	1187	542

#### **POLLING PLACES**

Polling District	Polling Place	Envisaged Polling Station for the next scheduled election
CNA	CNA	Longmeadow Evangelical Church, Church Oaks Cross, SG2 8LU
CNB	CNB	Walpole Court Communal Lounge, Blenheim Way, SG2 8TZ

#### **POTENTIAL DEVELOPMENTS**

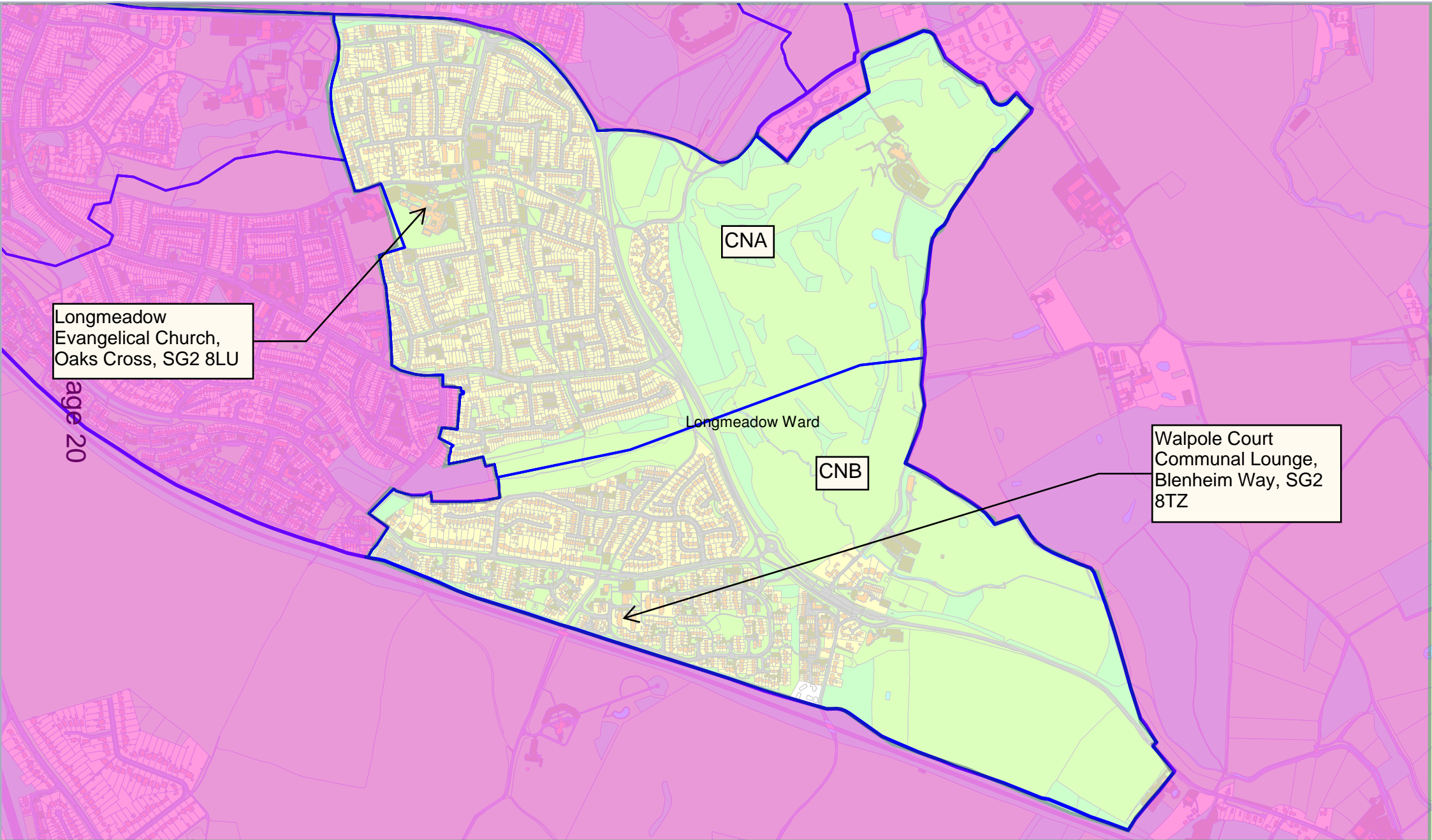
An increase in the number of properties in polling district CNB is expected over the next five years. It is not expected to impact on the allocation of polling districts and places.

#### **COMMENTS RECEIVED**

Comments were received from the Stevenage Liberal Democrats who had no objections to the draft proposals.

There are no amendments from the draft proposals to those in these final proposals.

# Stevenage Constituency - Longmeadow Borough Ward



## **POLLING DISTRICT AND POLLING PLACES REVIEW 2019**

### **STEVENAGE CONSTITUENCY**

#### **MANOR WARD**

The map of Manor Ward is available on the following page. The Ward has two Polling Districts. Details of the reference letters and electorate information are set out below:

#### **POLLING DISTRICTS AND STATISTICAL DATA**

Polling District	Electoral Division	Properties	Electors	In Person Voters	Postal Voters
CFA	Chells	1763	3312	2081	1231
CFB	Chells	931	1714	1124	590

#### **POLLING PLACES**

Polling District	Polling Place	Envisaged Polling Station for the next scheduled election
CFA	CFA	Chells Park Pavilion, Gresley Way, SG2 0NZ
CFB	CFB	Timebridge Community Centre, Mobbsbury Way, SG2 0HT

#### **POTENTIAL DEVELOPMENTS**

There are no developments within the Ward that are expected to impact on the allocation of Polling Districts and Places.

## **COMMENTS RECEIVED**

Comments were received from two of the Ward Councillors and the Stevenage Liberal Democrats in respect of the allocation of polling stations in the draft proposals for Polling District CFA.

The comments expressed opposition to the draft proposals to allocate Chells Park Pavilion as the polling station for Polling District CFA. This is due to it being at the southern end of the Ward, the transport links not being adequate and for some it will be further to travel. Further comments were that the previous polling station of Chells Manor Community Centre, which is outside of the Polling District and Ward, is more centrally located to the Ward with higher footfall due to closer local amenities.

Having considered the representations submitted, the use of Chells Park Pavilion in the draft proposals adheres to the guidance that the polling station is within the Polling District and the Ward. It also ensures that all electors have such reasonable facilities for voting as are practicable in the circumstances, and ensures so far as is reasonable and practicable is accessible to electors who are disabled (i.e. has disabled access, adequate room size, sufficient lighting, amongst other requirements).

There are no amendments from the draft proposals to those in these final proposals.

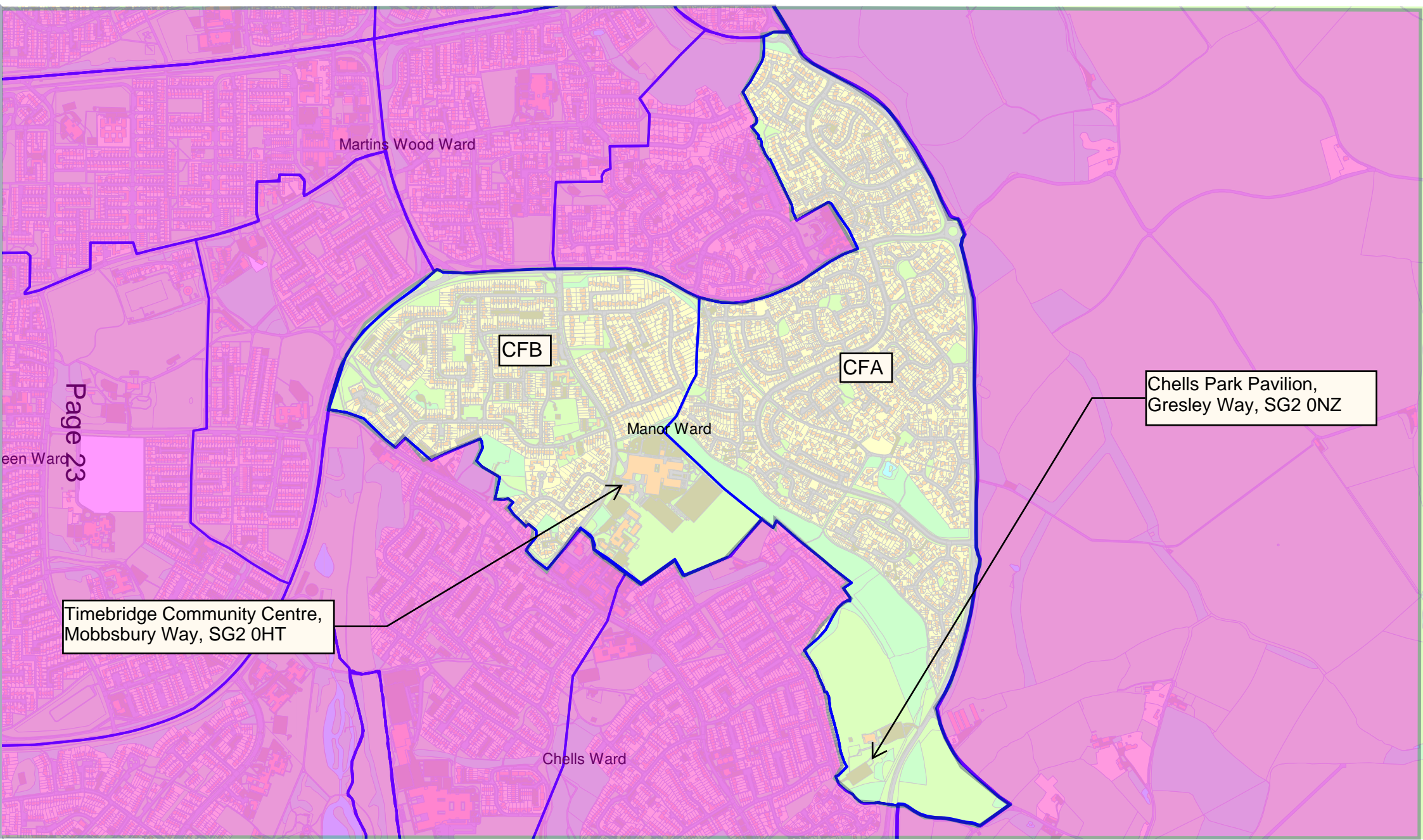
Comments were also received from two of the Ward Councillors and the Stevenage Liberal Democrats in respect of the allocation of polling stations in the draft proposals for Polling District CFB.

Comments were received from the Stevenage Liberal Democrats and one Ward Councillor that, although they did not have an absolute objection to using Timebridge Community Centre as a polling station which they felt would work well as it was closer for electors and had suitable parking close by, they suggested using the previously allocated polling station of St Hugh & St John Shared Church (which is outside of the Ward) as the polling station for voters in both CFB and CHA Polling Districts. This would mean allocating the Polling Place as both Polling Districts CFB and CHA. Administering two different Borough Ward elections at a polling venue would present significant administrative problems for the Returning Officer. It would create logistical problems for the staff, create confusion for the electorate, and also have significant legal implications around attendance at the polling station.

Comments were also received from a second Ward Councillor who expressed opposition to using Timebridge Community Centre as a polling station for CFB, citing issues of the building being busy, having large groups of students around it which could possibly intimidate voters, that it was further away from the shops and that there is no direct parking outside of the building. The venue has been assessed for suitability by election officers and, as well as adhering to the guidance that the polling station is within the Polling District and the Ward, it also ensures that all electors have such reasonable facilities for voting as are practicable in the circumstance, and ensures so far as is reasonable and practicable is accessible to electors who are disabled (i.e. has disabled access, adequate room size, sufficient lighting, amongst other requirements). A separate room will be used at the venue for voters and allocated parking and disabled parking (including off road parking) is available on site.

There are no amendments from the draft proposals to those in these final proposals.

# Stevenage Constituency - Manor Borough Ward



Polling District and Places Review 2019 -  
The Polling District designatory letters are shown in a black bordered white edged box. The boundaries are shown edged in blue

This page is intentionally left blank



## **POLLING DISTRICT AND POLLING PLACES REVIEW 2019**

### **STEVENAGE CONSTITUENCY**

#### **MARTINS WOOD WARD**

The map of Martins Wood Ward is available on the following page. The Ward has three Polling Districts. Details of the reference letters and electorate information are set out below:

#### **POLLING DISTRICTS AND STATISTICAL DATA**

Polling District	Electoral Division	Properties	Electors	In Person Voters	Postal Voters
CEA	Bedwell	1128	1896	1288	608
CEB	St Nicholas	876	1516	1004	512
CEC	Chells	686	1214	828	386

#### **POLLING PLACES**

Polling District	Polling Place	Envisaged Polling Station for the next scheduled election
CEA	CEA	Oval Community Centre, Vardon Road, SG1 5RD
CEB	CEB	Martins Wood Primary School, Mildmay Road, SG1 5RT
CEC	CEC	Chells Manor Community Centre, 12 Emperors Gate, SG2 7QX

#### **POTENTIAL DEVELOPMENTS**

There are no developments within the Ward that are expected to impact on the allocation of Polling Districts and Places.

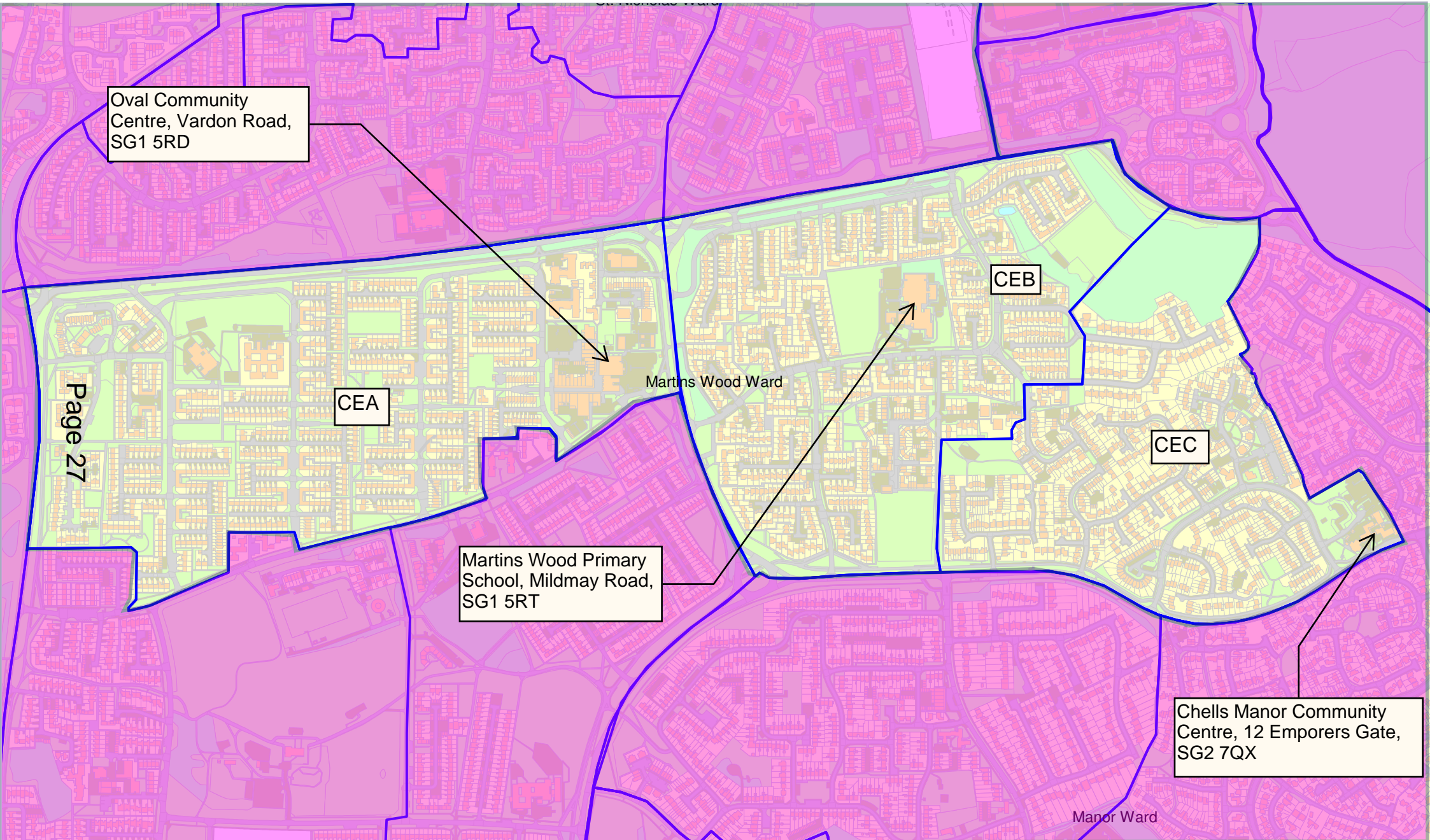
## **COMMENTS RECEIVED**

Comments were received from the Stevenage Liberal Democrats who expressed a view that they saw little added benefit for voters in Polling District CEC voting at Chells Manor Community Centre (who formerly voted at Martins Wood Primary School).

The basis of the proposals are that they adhere to the guidance on the allocation of Polling Districts and Polling Places, which includes the polling places and polling stations being within the Polling District and Ward. Chells Manor Community Centre is within Polling District CEC (which is within Manor Ward).

There are no amendments from the draft proposals to those in these final proposals.

# Stevenage Constituency - Martins Wood Borough Ward



Polling District and Places Review 2019 -  
The Polling District designatory letters are shown in a black bordered white edged box. The boundaries are shown edged in blue

This map is produced by Stevenage Borough Council. Crown copyright and database rights 2018 100024285

This page is intentionally left blank

## **POLLING DISTRICT AND POLLING PLACES REVIEW 2019**

### **STEVENAGE CONSTITUENCY**

#### **OLD TOWN WARD**

The map of Old Town Ward is available on the following page. The Ward has five Polling Districts. Details of the reference letters and electorate information are set out below:

#### **POLLING DISTRICTS AND STATISTICAL DATA**

Polling District	Electoral Division	Properties	Electors	In Person Voters	Postal Voters
CBA	Old Stevenage	803	1275	870	405
CBB	Old Stevenage	848	1415	931	484
CBC	Old Stevenage	1062	1631	1067	564
CBD	Old Stevenage	697	1221	747	474
CBE	Broadwater	508	855	576	279

#### **POLLING PLACES**

Polling District	Polling Place	Envisaged Polling Station for the next scheduled election
CBA	CBA	Springfield House Community Centre, 24 High Street, SG1 3EJ
CBB	CBB	Cromwell Hotel, High Street, SG1 3AZ
CBC	CBC	Methodist Church Hall, Sish Lane, SG1 3LS
CBD	CBD	Royal Oak Public House, 24 Walkern Road, SG1 3RA
CBE	CBE & CBA	Springfield House Community Centre, 24 High Street, SG1 3EJ

#### **POTENTIAL DEVELOPMENTS**

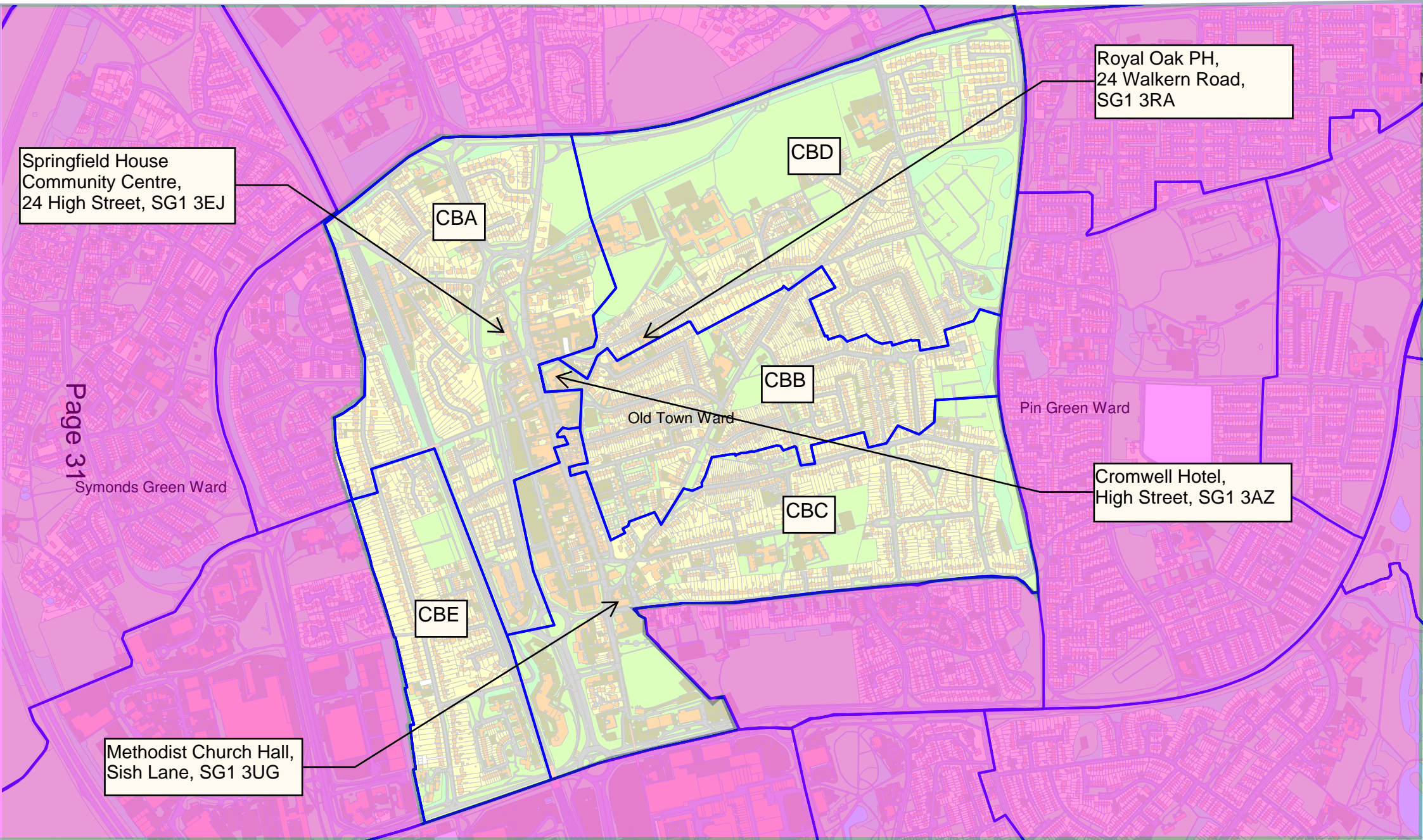
There are no developments within the Ward that are expected to impact on the allocation of Polling Districts and Places.

## **COMMENTS RECEIVED**

Comments were received from the Stevenage Liberal Democrats who had no objections to the draft proposals.

There are no amendments from the draft proposals to those in these final proposals.

# Stevenage Constituency - Old Town Borough Ward



Polling District and Places Review 2019 -  
The Polling District designatory letters are shown in a black bordered white edged box. The boundaries are shown edged in blue

This page is intentionally left blank



## **POLLING DISTRICT AND POLLING PLACES REVIEW 2019**

### **STEVENAGE CONSTITUENCY**

#### **PIN GREEN WARD**

The map of Pin Green Ward is available on the following page. The Ward has three Polling Districts. Details of the reference letters and electorate information are set out below:

#### **POLLING DISTRICTS AND STATISTICAL DATA**

Polling District	Electoral Division	Properties	Electors	In Person Voters	Postal Voters
CGA	Old Stevenage	481	812	562	250
CGB	Bedwell	1538	2566	1682	884
CGC	Bedwell	880	1408	933	475

#### **POLLING PLACES**

Polling District	Polling Place	Envisaged Polling Station for the next scheduled election
CGA	CGA	Stoney Hall Community Centre, Wornham Avenue, SG1 3UG
CGB	CGB	Hampson Park Community Centre, Hampson Park, Webb Rise, SG1 5QU
CGC	CGC	Moss Bury Primary and Nursery School, Webb Rise, SG1 5PA

#### **POTENTIAL DEVELOPMENTS**

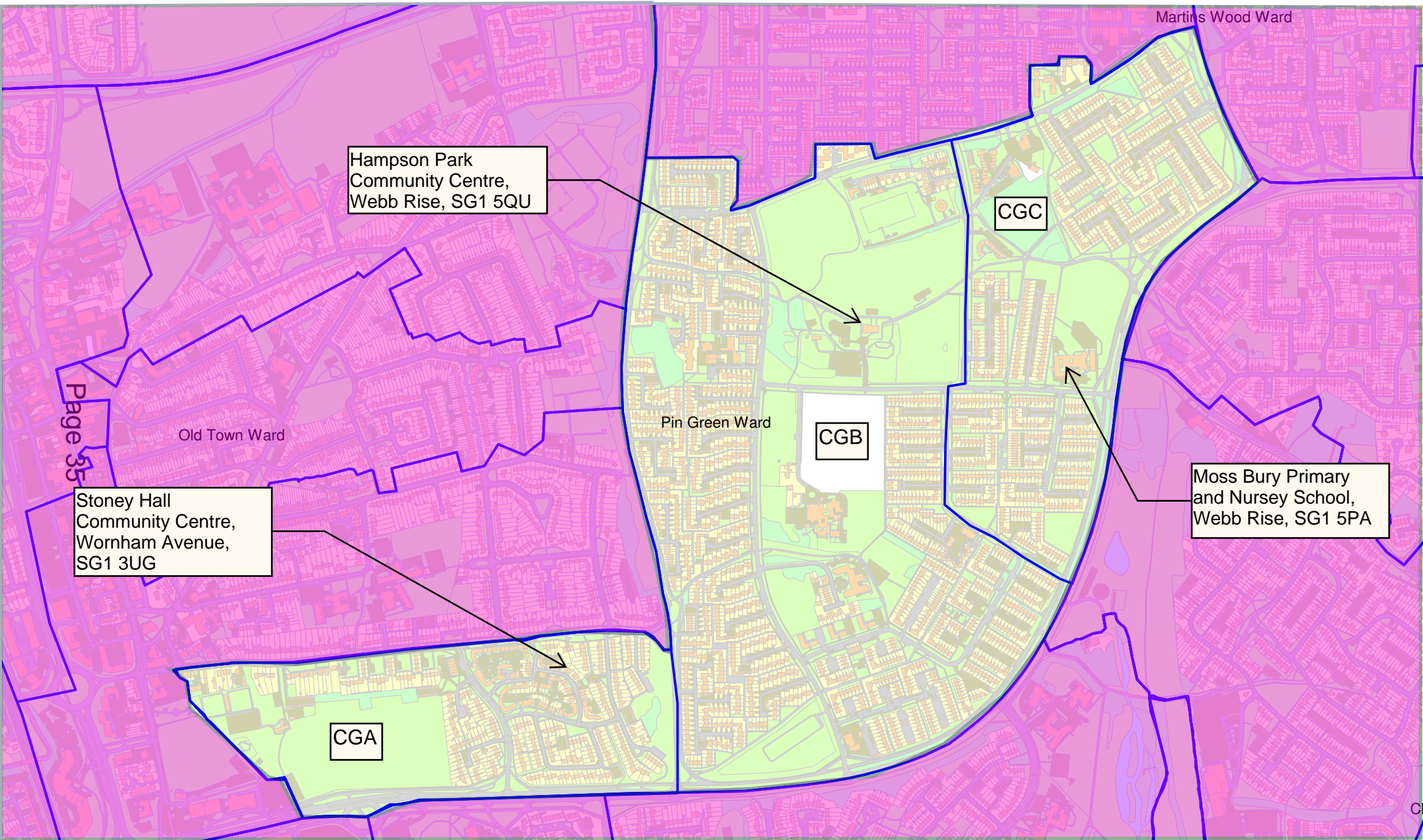
There are no developments within the Ward that are expected to impact on the allocation of Polling Districts and Places.

## **COMMENTS RECEIVED**

Comments were received from the Stevenage Liberal Democrats who had no objections to the draft proposals and further commented that they had received positive comments in respect of the use of Hampson Park Community Centre as a polling station at the most recent elections.

There are no amendments from the draft proposals to those in these final proposals.

# Stevenage Constituency - Pin Green Borough Ward



Page 35

Polling District and Places Review 2019 -  
The Polling District designatory letters are shown in a black bordered white edged box. The boundaries are shown edged in blue

This page is intentionally left blank

## **POLLING DISTRICT AND POLLING PLACES REVIEW 2019**

### **STEVENAGE CONSTITUENCY**

#### **ROEBUCK WARD**

The map of Roebuck Ward is available on the following page. The Ward has two Polling Districts. Details of the reference letters and electorate information are set out below:

#### **POLLING DISTRICTS AND STATISTICAL DATA**

Polling District	Electoral Division	Properties	Electors	In Person Voters	Postal Voters
CMA	Broadwater	1245	2093	1430	663
CMB	Broadwater	1741	3049	2040	1009

#### **POLLING PLACES**

Polling District	Polling Place	Envisaged Polling Station for the next scheduled election
CMA	CMA	St Pauls Methodist Church, Turpins Rise, SG2 8QR
CMB	CMB	St Peters Church, The Willows, SG2 8AN

#### **POTENTIAL DEVELOPMENTS**

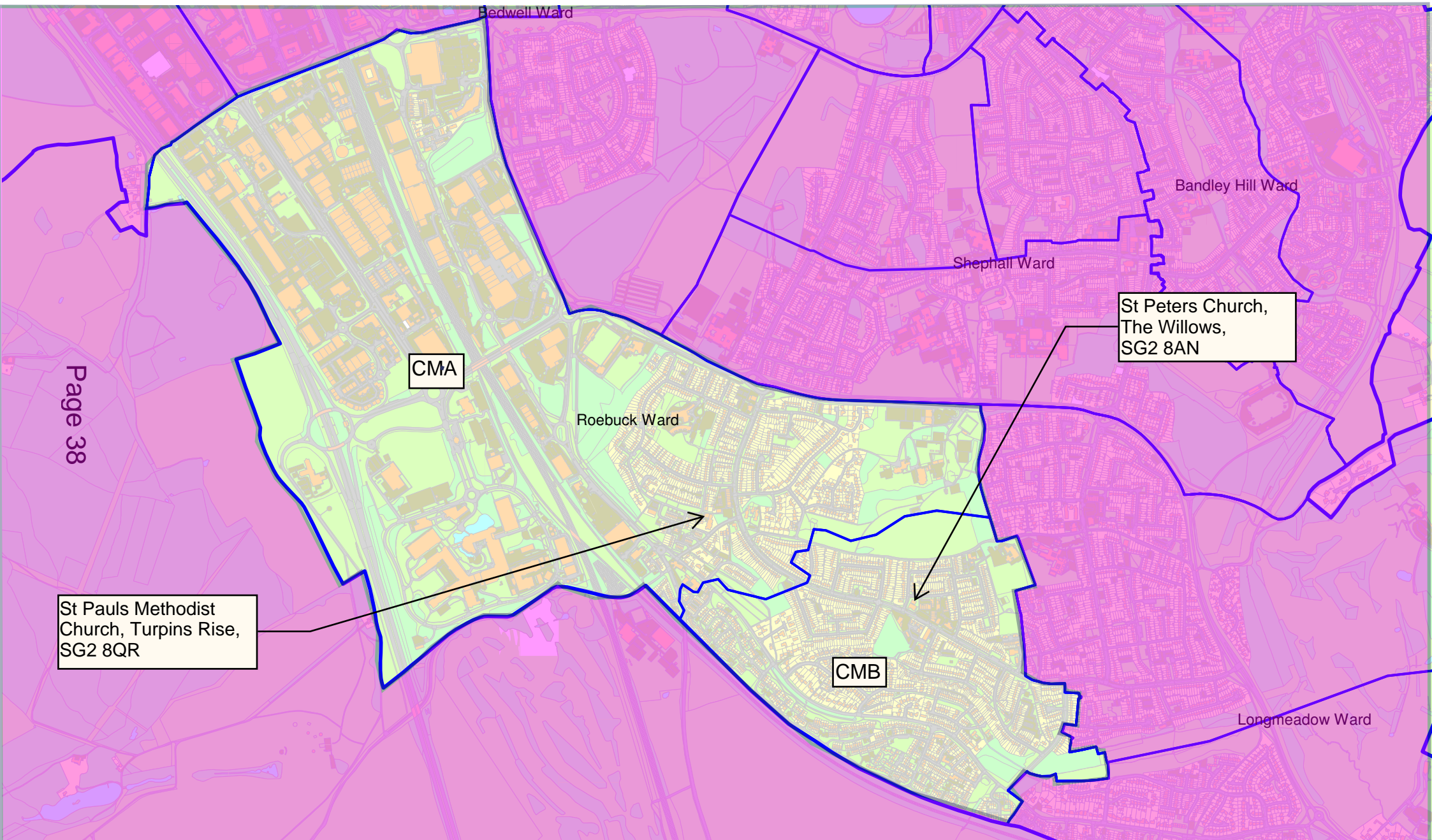
There are no developments within the Ward that are expected to impact on the allocation of Polling Districts and Places.

#### **COMMENTS RECEIVED**

Comments were received from the Stevenage Liberal Democrats who had no objections to the draft proposals.

There are no amendments from the draft proposals to those in these final proposals.

# Stevenage Constituency - Roebuck Borough Ward



Page 38

St Pauls Methodist  
Church, Turpins Rise,  
SG2 8QR

St Peters Church,  
The Willows,  
SG2 8AN

Polling District and Places Review 2019 -  
The Polling District designatory letters are shown in a black bordered white edged box. The boundaries are shown edged in blue

## **POLLING DISTRICT AND POLLING PLACES REVIEW 2019**

### **STEVENAGE CONSTITUENCY**

#### **SHEPHALL WARD**

The map of Shephall Ward is available on the following page. The Ward has three Polling Districts. Details of the reference letters and electorate information are set out below:

#### **POLLING DISTRICTS AND STATISTICAL DATA**

Polling District	Electoral Division	Properties	Electors	Station Voters	Postal Voters
CKA	Shephall	1215	2255	1538	717
CKB	Shephall	908	1622	1107	515
CKC	Shephall	430	721	501	220

#### **POLLING PLACES**

Polling District	Polling Place	Envisaged Polling Station for the next scheduled election
CKA	CKA	The Shephall Centre, Shephall Green, SG2 9XR
CKB	CKB	Peartree Park Pavillion, The Ridings, SG2 9UA
CKC	CKC	Grace Church Community Hall, Hydean Way, SG2 9XJ

#### **POTENTIAL DEVELOPMENTS**

There are no developments within the Ward that are expected to impact on the allocation of Polling Districts and Places.

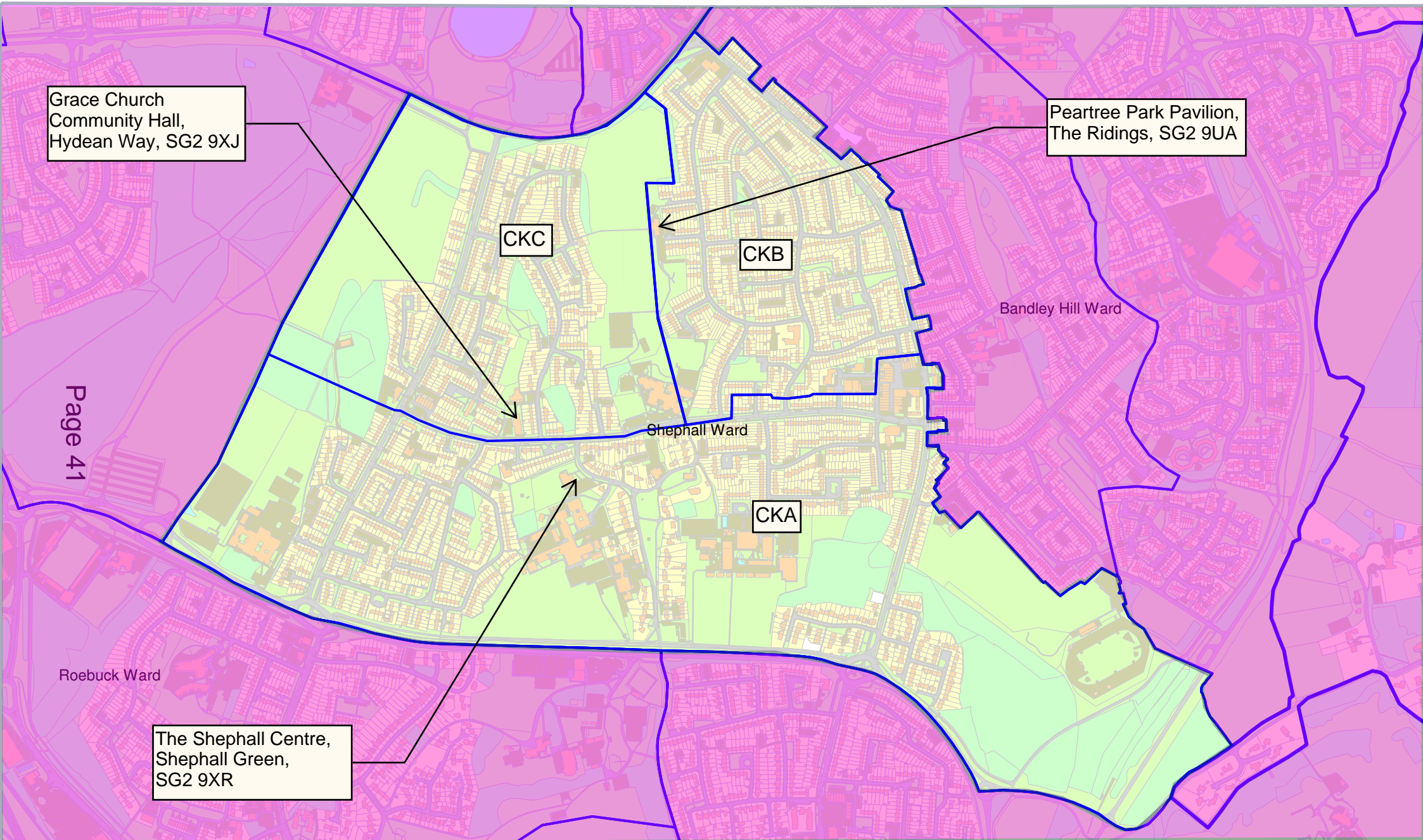
## **COMMENTS RECEIVED**

Comments were received from the Stevenage Liberal Democrats who welcomed the addition of the new Polling District CKC and the assigned polling station at Grace Church Community Hall.

There are no amendments from the draft proposals to those in these final proposals.



# Stevenage Constituency - Shephall Borough Ward



Page 41

Polling District and Places Review 2019 -  
The Polling District designatory letters are shown in a black bordered white edged box. The boundaries are shown edged in blue

This page is intentionally left blank

## **POLLING DISTRICT AND POLLING PLACES REVIEW 2019**

### **STEVENAGE CONSTITUENCY**

#### **ST NICHOLAS WARD**

The map of St Nicholas Ward is available on the following page. The Ward has five Polling Districts. Details of the reference letters and electorate information are set out below:

#### **POLLING DISTRICTS AND STATISTICAL DATA**

Polling District	Electoral Division	Properties	Electors	In Person Voters	Postal Voters
CDA	St Nicholas	813	1525	1060	465
CDB	St Nicholas	1158	2160	1452	708
CDC	St Nicholas	600	907	645	262
CDD	Chells	440	728	513	215
CDE	St Nicholas	5	5	5	0

#### **POLLING PLACES**

Polling District	Polling Place	Envisaged Polling Station for the next scheduled election
CDA	CDA & CDB	St Nicholas Community Centre, 59 Canterbury Way, SG1 4LJ
CDB	CDB	St Nicholas Community Centre, 59 Canterbury Way, SG1 4LJ
CDC	CDC & CDB	St Nicholas Community Centre, 59 Canterbury Way, SG1 4LJ
CDD	CDD & CDB	St Nicholas Community Centre, 59 Canterbury Way, SG1 4LJ
CDE	CDE & CDB	St Nicholas Community Centre, 59 Canterbury Way, SG1 4LJ

#### **POTENTIAL DEVELOPMENTS**

An increase in the number of properties in polling district CDC is expected over the next five years. It is not expected to impact on the allocation of polling districts and places.

## **COMMENTS RECEIVED**

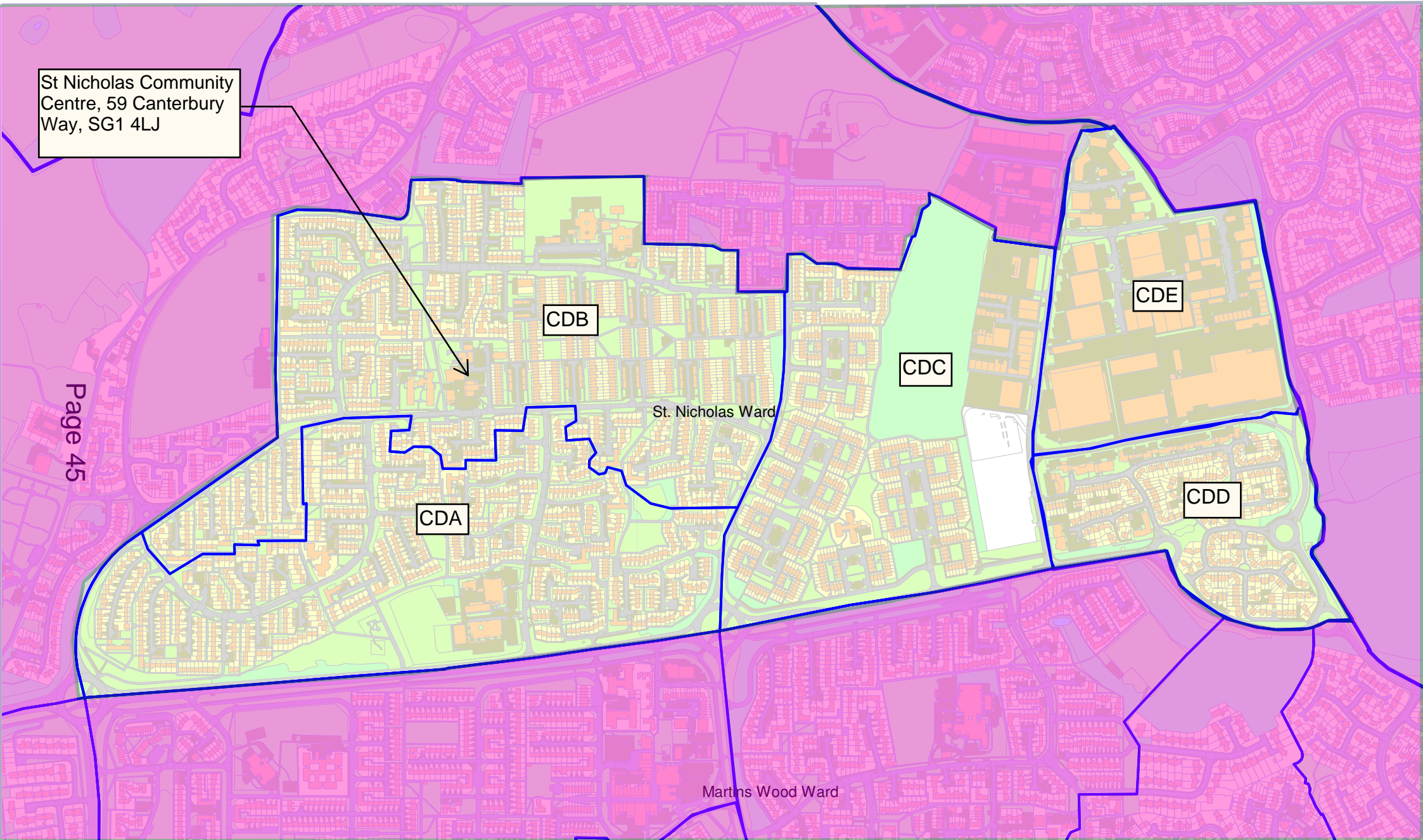
Comments were received from the Stevenage Liberal Democrats who have suggested using St Nicholas Recreation Centre (the proposed polling station for voters in Polling District CCC within Woodfield Ward) as the polling station for voters in Polling Districts CDC, CDD and CDE. The suggestion is to use the polling venue for both Borough Ward elections in Woodfield and St Nicholas.

Allocating two different Borough Ward elections to a polling venue would present significant administrative problems for the Returning Officer at an election. It would create logistical problems for the staff, create confusion for the electorate, and also have significant legal implications around attendance at the polling station.

The basis of the proposals are that the polling places and polling stations are within the Polling District and Ward, thus adhering to the guidance on the allocation of Polling District and Polling Places. St Nicholas Recreation Centre is within Polling District CCC which is within Woodfield Ward. For voters in Polling Districts CDC, CDD and CDE, St Nicholas Community Centre is a similar distance to travel to St Nicholas Recreation Centre and therefore these arrangements do not present any significant difference in respect of distance or travel.

There are no amendments from the draft proposals to those in these final proposals.

# Stevenage Constituency - St. Nicholas Borough Ward



St Nicholas Community Centre, 59 Canterbury Way, SG1 4LJ

CDB

CDC

CDE

CDD

CDA

St. Nicholas Ward

Martins Wood Ward

Page 45

Polling District and Places Review 2019 -  
The Polling District designatory letters are shown in a black bordered white edged box. The boundaries are shown edged in blue

This page is intentionally left blank

## **POLLING DISTRICT AND POLLING PLACES REVIEW 2019**

### **STEVENAGE CONSTITUENCY**

#### **SYMONDS GREEN WARD**

The map of Symonds Green Ward is available on the following page. The Ward has three Polling Districts. Details of the reference letters and electorate information are set out below:

#### **POLLING DISTRICTS AND STATISTICAL DATA**

Polling District	Electoral Division	Properties	Electors	In Person Voters	Postal Voters
CAA	Old Stevenage	1934	3297	2114	1183
CAB	Old Stevenage	662	980	699	281
CAC	Broadwater	111	198	103	95

#### **POLLING PLACES**

Polling District	Polling Place	Envisaged Polling Station for the next scheduled election
CAA	CAA	Symonds Green Community Centre, Filey Close, SG1 2JW
CAB	CAB, CAA & CAC	Symonds Green Community Centre, Filey Close, SG1 2JW
CAC	CAC	Woolenwick Junior School, Bridge Road West, SG1 2NU

#### **POTENTIAL DEVELOPMENTS**

A substantial increase is envisaged in the number of properties in polling district CAC over the next five years (known as Land West of Stevenage). By assigning electors in polling district CAB to vote at Symonds Green Community Centre it provides for Woolenwick Junior School to have the capacity accommodate the additional voters expected over this period.

## **COMMENTS RECEIVED**

Comments were received from the Stevenage Liberal Democrats who had no objections to the draft proposals.

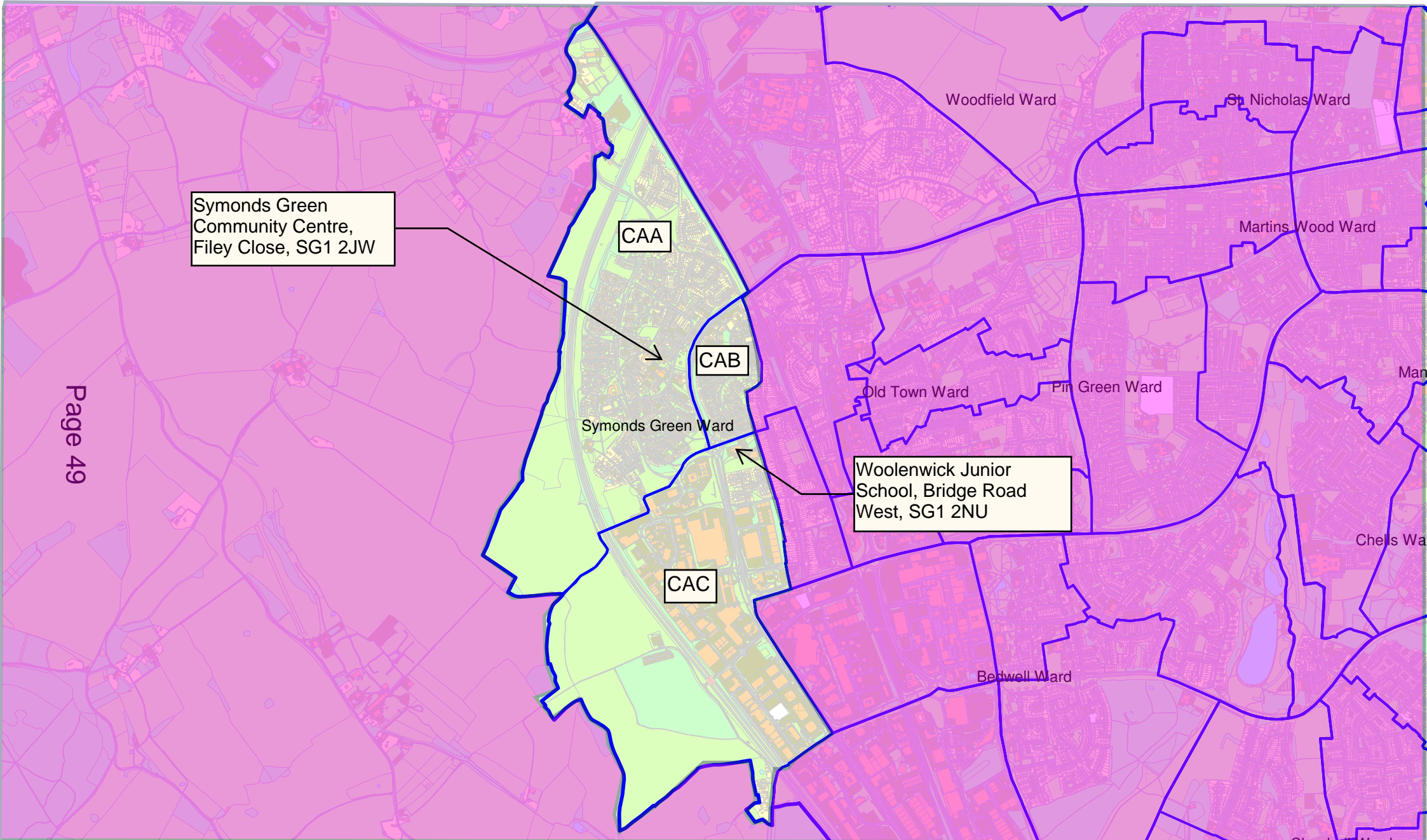
A comment was received in respect of using Woolenwick Junior School as a polling station for voters in Polling District CAC, due to its proximity to the other polling station within the ward (Symonds Green Community Centre) and the potential disruption to the school. The comment references that the venues are only 200 yards away, when they are in fact almost a mile away in walking distance. Further, Woolenwick Junior School does not close on Polling Day.

The basis of the proposals are that they adhere to the guidance on the allocation of Polling Districts and Polling Places, which includes the polling places and polling stations being within the Polling District and Ward. Woolenwick Junior School is within Polling District CAC.

There are no amendments from the draft proposals to those in these final proposals.



# Stevenage Constituency - Symonds Green Borough Ward



This page is intentionally left blank

## **POLLING DISTRICT AND POLLING PLACES REVIEW 2019**

### **STEVENAGE CONSTITUENCY**

#### **WOODFIELD WARD**

The map of Woodfield Ward is available on the following page. The Ward has three Polling Districts. Details of the reference letters and electorate information are set out below:

#### **POLLING DISTRICTS AND STATISTICAL DATA**

Polling District	Electoral Division	Properties	Electors	In Person Voters	Postal Voters
CCA	St Nicholas	1135	1991	1167	824
CCB	St Nicholas	999	1887	1274	613
CCC	St Nicholas	206	389	248	141

#### **POLLING PLACES**

Polling District	Polling Place	Envisaged Polling Station for the next scheduled election
CCA	CCA	Joint Emergency Service Academy, Hitchin Road, SG1 4AE
CCB	CCB	Weston Road Cemetery, Weston Road, SG1 3RP
CCC	CCC	St Nicholas Recreation Centre, Pilgrims Way SG1 4PT

#### **POTENTIAL DEVELOPMENTS**

A substantial increase is envisaged in the number of properties in Woodfield Ward over the next five years (known as Land North of Stevenage). Those properties will be located within polling district CCA.

## **COMMENTS RECEIVED**

Comments were received from the Stevenage Liberal Democrats who welcomed the addition of the new Polling District CCC.

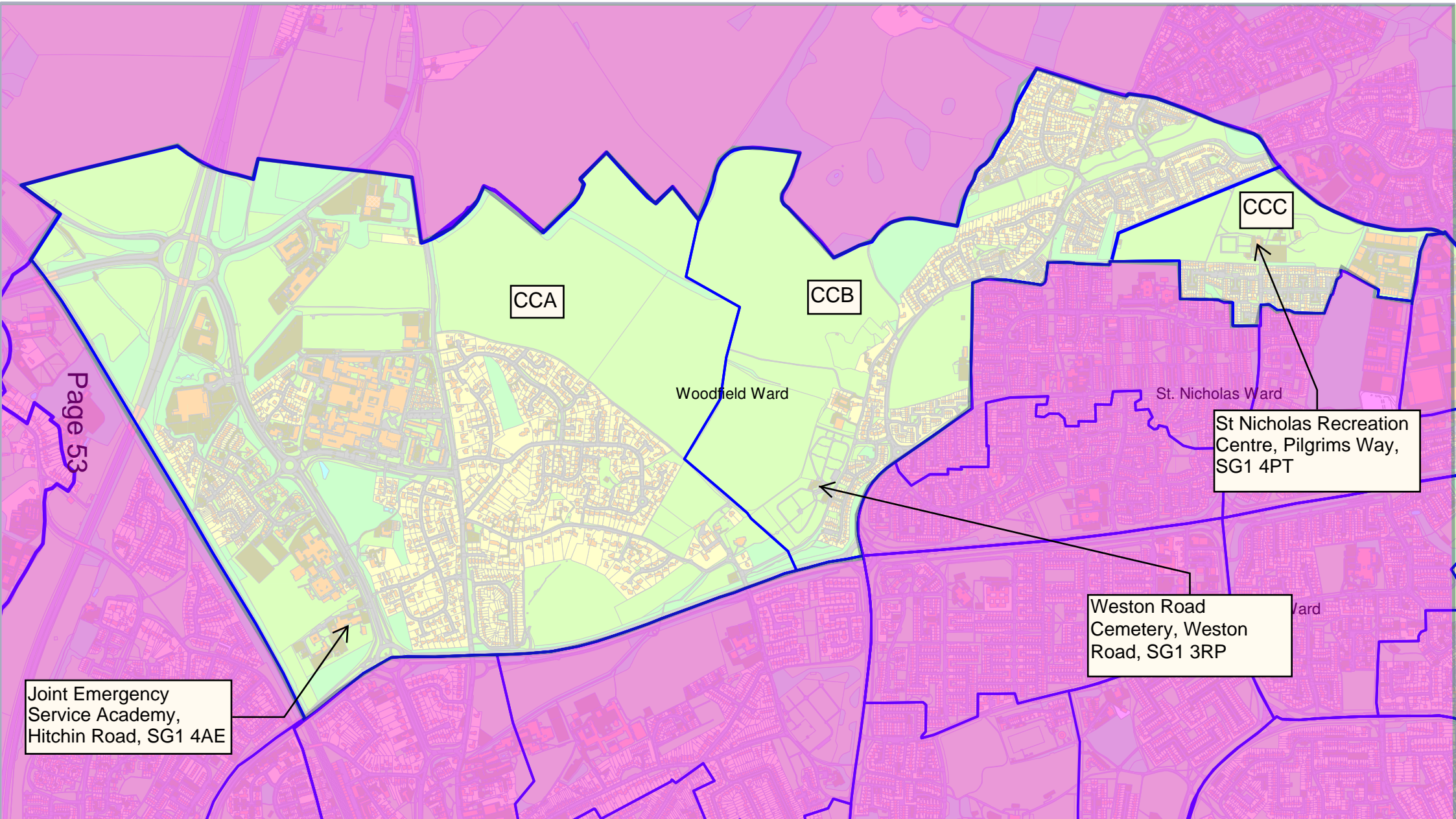
Whilst outside of the scope of this review, comments were received from the Leader of Stevenage Borough Council, the Stevenage Liberal Democrats and three individuals in respect of the use of Weston Road Cemetery as a polling station for Polling District CCB. The comments primarily centred around the appropriateness of using the Cemetery building as a polling station, but comments were also received regarding the infrastructure surrounding the venue.

The polling station previously used for the Polling District was Canterbury Way Park Pavilion which has now closed. Canterbury Way Park Pavilion itself was not an ideal venue, as electors had to cross a substantive field space in order to arrive at the polling station should they want to walk there. The location of Weston Road Cemetery is easier for residents to access. Many different types of buildings are used as polling stations across the UK, including churches, cemeteries, schools and public houses. The building has now been used for both a local and national poll, and at the most recent European Parliamentary election the Returning Officer did not receive any negative comments in respect of its use as a polling station. Through the review process none of the comments received have suggested an alternative venue that is available for use as a polling station, therefore the area is limited to the Cemetery building being the only viable polling station available. For those who do find accessing the polling station an issue, absent voting arrangements are available, such as a postal or proxy voting. Absent voting information will be included in materials sent prior to an election.

Whilst taking into consideration the views received, in so far as the review is concerned the Polling Place will be designated as the Polling District as per the draft proposals. On this basis should an alternative venue be identified at any stage within the Polling District after this review and prior to any election, it would be possible to use this as a polling station should it be considered appropriate.

There are no amendments from the draft proposals to those in these final proposals.

# Stevenage Constituency - Woodfield Borough Ward



Polling District and Places Review 2019 -

The Polling District designatory letters are shown in a black bordered white edged box. The boundaries are shown edged in blue

This page is intentionally left blank

## Polling District and Places Review 2019

### Responses to consultation

Polling District	Ward	Consultee	Comment	Response
CLA and CLB	Bandley Hill	Stevenage Liberal Democrats	We have no objections to the review's recommendations.	No comments other than to thank the consultee.
CJA, CJB, CJC and CJD	Bedwell	Stevenage Liberal Democrats	<p>We have no objection to the use of Daneshill House as a Polling Station for Polling District CJD. This will make it easier for residents living in the Town Centre to access their Polling Station in many cases without the need to drive or attempt to cross St George's Way.</p> <p>With the future planned development of residential units within the Town Centre, as the 2<sup>nd</sup> largest ward in the town already, it is likely that the ward boundaries will need to be seriously looked at within the next ward boundary review.</p>	No comments other than to thank the consultee.
CHA, CHB, CHC and CHD	Chells	Stevenage Liberal Democrats	<p>We welcome the Council's decision to stop the use of the sailing centre as a Polling Station for CHC Polling District. Historically usage of this Polling Station has been extremely low for many years. This is partly due to voter turnout on the day of elections but also on the siting of the Polling Station itself and lack of visibility. Whilst further away, with limited suitable spaces within CHC, we have no objection to the usage of Camps Hill Primary School as the Polling Station for CHC. It is highly visible, well known and has sufficient parking on Polling Days. Camps Hill Primary School has also successfully operated as a Polling Station for three Polling Districts for many years and we are confident that this could continue.</p> <p>As a means to improve voter turnout as part of these changes, we would however strongly urge the Council to undertake a marketing</p>	No comments other than to thank the consultee and advise that absent voting information will be included in materials sent prior to an election.

			<p>drive within CHC to increase the take-up of postal voters.</p> <p>We have no objections to the usage of St Hugh and St John's Church as a Polling Station for CHA. St Hugh and St John's Church has been a successful polling station for many years for Manor Ward. For many voters in CHA it will also be closer if not equidistant to their former Polling Station at Camps Hill Primary School.</p>	
CHB and CHD	Chells	Ref: SBC001	<p>I do think it's unfair that Campshill is used every year especially this year as there has been 2 occasions of voting in May. Working parents like myself also suffer as have to take time off and some of it unpaid. I think the school has enough time off with inset days etc. Also parents get in trouble for taking kids out of school for a day but it's ok for the school to close</p> <p>I'm against schools closing for voting</p>	Response advises that Hertfordshire County Council, working with Election Teams across the County, are proactive in contacting schools in advance of an election to work through how best to accommodate arrangements on Polling Day, including encouraging schools to allocate Polling Day as a staff training day.
CHB and CHD	Chells	Ref: SBC002	<p>I am writing as part of the review that you are currently undertaking regarding polling places for the Borough of Stevenage.</p> <p>This is specifically with regards to the Chells district and polling place of Camps Hill School.</p> <p>I am not supportive of the school being used as a polling place. When this takes place my children are required to miss a day of their education and this year they were required to miss two days of their education.</p> <p>Whilst this may not seem significant there is also the impact that it has for us as parents that are in employment as we are required to take annual leave in order to care for our children. There is no</p>	Response advises that Hertfordshire County Council, working with Election Teams across the County, are proactive in contacting schools in advance of an election to work through how best to accommodate arrangements on Polling Day, including encouraging schools to allocate Polling Day as a staff training day.



			<p>option for them to attend a holiday club as obviously these are not available during the school term.</p> <p>And whilst two days may not seem significant add these to the 13 weeks of school holidays and the five inset days per year it does have a financial impact for the families whose children attend Camps Hill.</p> <p>And as a parent who has 24 days annual leave and who has no other option for childcare besides paying for my 3 children to attend a holiday club, I begrudge having to use a day of my annual leave in order for my children's school to be used as a polling place.</p> <p>There must be other options that do not impact on my children's education or parents finances especially in Chells where the impact is only on the children and parents of those children that attend Camps Hill.</p>	
CNA and CNB	Longmeadow	Stevenage Liberal Democrats	We have no objections to the review's recommendations.	No comments other than to thank the consultee.
CFA and CFB	Manor	Councillor Andy McGuinness	<p>I believe that the need for changing the Polling Station in CFB comes from seeking to adhere strictly to regulations rather than using commonsense and putting the needs of residents first.</p> <p>St Hugh and St John's is an excellent polling station which works well. I have no doubt that Timebridge Community Centre would also work well as a Polling Station for CFB. It is in the ward and well located for local people to get to with sufficient parking.</p> <p>However, I would question the need and expense of altering current arrangements as well as using two separate and very proximate Polling Stations when one would do both for CFB in Manor and CHA</p>	Response will advise that, in respect of Polling District CFB, the response advises that allocating St Hugh & St John Shared Church (which is outside of the Ward) as the polling station for voters in both CFB and CHA Polling Districts would mean allocating the Polling Place as both Polling Districts CFB and CHA. Administering two different Borough Ward elections at a polling venue would present significant

			<p>in Chells. Economies of scale could be had by using the Church to serve both ward’s needs. Whilst I believe that this is much more viable option and believe the current proposals to be suboptimal, I wouldn’t absolutely object to Timebridge Community Centre being used as a Polling Station for Manor Ward.</p> <p>On the other hand, I am extremely disappointed and angry at the proposals to change the Polling Station serving my residents in CFA. This is no way serves the best interests of local people and I object to the proposals in the most strongest of terms.</p> <p>The Chells Park Pavilion is at the absolute Southern end of the Ward and far away from most residents. In fact if you tried to get further away you couldn’t. The transport links are poor and it means people having to travel much further than they already have to. Chells Manor Community is almost at the centre of the ward and is a perfect location to serve the needs of my local residents. It is near for the majority of local people to get to by walking and reducing unnecessary car journeys. This is simply not true with Chells Park which can only really be accessed by car. This goes against the Councils Green Travel Strategy.</p> <p>I would understand if this decision was forced onto us if the current building (Chells Manor Community Centre) was unfit to use. But it is not – the proposed changes are just to adhere to some silly diktat which obviously previous officers in the Council were happy to ignore for the best interests of local people.</p> <p>The proposed changes would be very unpopular with local residents and the Council would not be putting the needs of local residents first.</p> <p>There are very real and suitable exceptional circumstances why</p>	<p>administrative problems for the Returning Officer. It would create logistical problems for the staff, create confusion for the electorate, and also have significant legal implications around attendance at the polling station. Timebridge Community Centre adheres to the guidance as it is within the Polling District and the Ward. It also ensures that all electors have such reasonable facilities for voting as are practicable in the circumstance, and ensures so far as is reasonable and practicable is accessible to electors who are disabled (i.e. has disabled access, adequate room size, sufficient lighting, amongst other requirements) .</p> <p>In respect of Polling District CFA, the use of Chells Park Pavilion as a polling station adheres to the guidance that the polling station is within the Polling District and the Ward. It also ensures that all electors have such reasonable facilities for voting as are practicable in the circumstance, and ensures so far as is reasonable and practicable is accessible to electors who are disabled (i.e. has disabled access, adequate room size, sufficient</p>
--	--	--	--	---

			Chells Manor Community Centre should continue to be used as a Polling Station for CFA and I would strongly urge the Council to reconsider their proposals and keep previous arrangements in place.	lighting, amongst other requirements).
CFA and CFB	Manor	Stevenage Liberal Democrats	<p>Whilst we view it as an unnecessary change which will cause some disruption to local residents, we have no absolute objection to the use of Timebridge Community Centre as a Polling Station for CFB. It is a little closer for most residents to access on foot compared to St Hugh and St John's Church and there is suitable parking close by. To ensure the efficient use of budget and resources, we see no reason and would therefore like to explore the possibility of using St Hugh and St John's as a polling station for both CFB in Manor and CHA in Chells wards.</p> <p>However, we have very grave concerns regarding the proposed usage of Chells Park Pavilion as a Polling Station for CFA. The rationale for the proposed changes has absolutely nothing to do with the wants or needs of local residents but about simply adhering to practice about Polling Stations being sited in ward boundaries. All three ward Councillors strongly object to the changes and believe they will be highly unpopular and absolutely unnecessary.</p> <p>For many years, Chells Manor Community Centre has been a very successful polling station for people in CFA in Manor Ward. It is centrally placed for the ward, located between the roads off Valerian Way and the roads located around The White Way. The Community Centre serves the Manor residents and the local shops form an intrinsic part of the facilities that serves the local area. It is only through erroneously sited ward boundaries that the area is not formally part of Manor Ward.</p> <p>The area is highly visible and receives high footfall locally from</p>	Response will advise that, in respect of Polling District CFB, the response advises that allocating St Hugh & St John Shared Church (which is outside of the Ward) as the polling station for voters in both CFB and CHA Polling Districts would mean allocating the Polling Place as both Polling Districts CFB and CHA. Administering two different Borough Ward elections at a polling venue would present significant administrative problems for the Returning Officer. It would create logistical problems for the staff, create confusion for the electorate, and also have significant legal implications around attendance at the polling station. Timebridge Community Centre adheres to the guidance as it is within the Polling District and the Ward. It also ensures that all electors have such reasonable facilities for voting as are practicable in the circumstance, and ensures so far as is reasonable and practicable is accessible to electors who are disabled (i.e. has disabled

			<p>Manor Ward residents. A large percentage of local residents can walk to the polling station whilst also accessing other services. It has a bus service that serves the area and has excellent parking.</p> <p>Chells Park Pavilion is located at the absolute southern end of the ward and it is not served by any bus routes nor does it ensure high footfall from other businesses surrounding the building. It is very far from most residents and would be an extremely long way for residents to travel from Valerian Way at the North end of the ward. In a radius of 500m, there is just under 500 residents that live near Chells Park Pavilion. For Chells Manor Community Centre, most of the 3312 electors live within a 500m radius of the Community Centre. This just demonstrates the impact of the proposed changes and the current suitability of the current arrangements which do not need to change at all.</p> <p>The proposed changes would be very unpopular with local residents and the Council would not be putting the needs of local residents first.</p> <p>There are very real and suitable exceptional circumstances why Chells Manor Community Centre should continue to be used as a Polling Station for CFA and we would strongly urge the Council to reconsider their proposals.</p>	<p>access, adequate room size, sufficient lighting, amongst other requirements).</p> <p>In respect of Polling District CFA, the use of Chells Park Pavilion as a polling station adheres to the guidance that the polling station is within the Polling District and the Ward. It also ensures that all electors have such reasonable facilities for voting as are practicable in the circumstance, and ensures so far as is reasonable and practicable is accessible to electors who are disabled (i.e. has disabled access, adequate room size, sufficient lighting, amongst other requirements). A separate room will be used at the venue for voters and allocated parking and disabled parking (including off road parking) is available on site.</p>
CFA and CFB	Manor	Councillor Robin Parker	<p>I wish to comment on the proposals for polling places in Manor Ward.</p> <ol style="list-style-type: none"> <li>1. I am very opposed to the proposal to use Chells Park Pavilion instead of Chells Manor Community Centre for CFA.</li> </ol> <p>(a) The fact is that Chells Park Pavilion is right at the extreme southern end of the ward and is therefore a long way from most of the voters.</p>	<p>Response will advise that, in respect of Polling District CFA, the use of Chells Park Pavilion as a polling station adheres to the guidance that the polling station is within the Polling District and the Ward. It also ensures that all electors have such reasonable facilities for voting as are</p>

			<p>b. Also, it has no bus stop near and is not accessible to many voters.</p> <p>c. In addition, it is totally unsuitable for disabled or elderly voters because there is a long exterior staircase to negotiate to get to the building.</p> <p>d. Vehicle access is not easy from Gresley Way, especially in the evening rush hour (when many people choose to vote) because Gresley Way is extremely busy (and likely to get busier when/if the Gresley Park development is built) making turning into and out of the entrance to Chells Park Pavilion from/to Gresley Way very difficult.</p> <p>e. Chells Park Pavilion is not near any local services or shops, so people who vote when they also visit the local shops will not be able to do so.</p> <p>f. The fact that the present polling place, Chells Manor Community Centre, is just outside the Manor Ward boundary is of no consequence, because it is only a few metres outside, and most voters would not know this fact anyway.</p> <p>2. I am also opposed to the proposal to use Timebridge rather than The Church of St. Hugh and St. John for CFB.</p> <p>a. Timebridge is a very busy building, with lots of other activities in progress both during the day and particularly during the evening (when many people choose to vote). The atmosphere is not suitable for a polling station, with noise and disturbance and a bar.</p> <p>b. By contrast, the church is fairly isolated and certainly quiet and dignified and otherwise unused during polling hours.</p> <p>c. Timebridge also suffers from large groups of students around it, particularly at lunchtime, but also before and after school. These are a disincentive and a possible intimidation to voters. This is certainly not the case for the</p>	<p>practicable in the circumstance, and ensures so far as is reasonable and practicable is accessible to electors who are disabled (i.e. has disabled access, adequate room size, sufficient lighting, toilet facilities, amongst other requirements). There is disabled access to the side of the building.</p> <p>In respect of Polling District CFB, Timebridge Community Centre adheres to the guidance as it is within the Polling District and the Ward. It also ensures that all electors have such reasonable facilities for voting as are practicable in the circumstance, and ensures so far as is reasonable and practicable is accessible to electors who are disabled (i.e. has disabled access, adequate room size, sufficient lighting, toilet facilities, amongst other requirements). A separate room will be used at the venue for voters and allocated parking and disabled parking (including off road parking) is available on site. In respect of the comments raised concerning issues at and surrounding the venue, they are not reflective of our understanding. The building is a functioning community centre which</p>
--	--	--	--	--

			<p>church.</p> <p>d. Timebridge is further from The Glebe shops than the church, so that voters who combine a visit to the shops with voting will be inconvenienced.</p> <p>e. Parking does not exist for visitors to Timebridge (the space to the left of the building, as viewed from the front, between Timebridge and Nobel School, is <b>not</b>, as is widely and wrongly believed, a parking area; in fact parking is expressly forbidden there [see signs on the ground]). By contrast, the church has parking available both at The Glebe and also on both The Glebe service roads.</p> <p>f. The fact that the present polling place, the church, is just outside the Manor Ward boundary is of no consequence, because it is only a few metres outside, and most voters would not know this fact anyway.</p>	<p>serves the community in its area. Many community centres are used in the Borough as they are well established buildings that residents are aware of and frequent regularly.</p>
CEA, CEB and CEC	Martins Wood	Stevenage Liberal Democrats	<p>We object to the changes proposed by the Council and believe the current Polling Station arrangements currently work and should continue.</p> <p>We believe that the proposed changes to the Polling Station for CEC will be of little added benefit for most local residents. Those residents in CEC that would benefit from the new proposed Polling Station at Chells Manor Community Centre are equally balanced by those that would lose out under these new proposals and would rather benefit from keeping the previous arrangements by voting at Martins Wood Primary School. Because of this, we so no real over-riding rationale as to why previously successful arrangements should be changed.</p>	<p>Response will advise that the basis of the proposals are that they adhere to the guidance on the allocation of Polling Districts and Places, which includes the polling places and polling stations being within the Polling District and Ward. Chells Manor Community Centre is within Polling District CEC and Manor Ward.</p>
CBC	Old Town	Ref: SBC003	<p>As bookings Secretary at High Street Methodist Church Stevenage I was responsible for the smooth running of the recent local and European Polls on behave of High street.</p>	<p>No comments other than to thank the consultee</p>

			<p>There was from our point of view no negative feedback from any of our staff or users regarding the use of the building during the polling.</p> <p>High Streets acceptance of storing the polling booth between the two polls seemed to work well and may be used again if there is a need when we host two polls in a short space of time.</p> <p>Another positive is that we have a new disabled toilet.</p>	
CBA, CBB, CBC, CBD and CBE	Old Town	Stevenage Liberal Democrats	We have no objections to the review's recommendations.	No comments other than to thank the consultee
CGA, CGB and CGC	Pin Green	Stevenage Liberal Democrats	<p>We have no objections to the review's recommendations.</p> <p>We have received positive comments from residents about the recent change in the Polling Station for CGB Polling District and believe that Hampson Park Community Centre is highly visible and works well as a Polling Station with excellent parking facilities.</p>	No comments other than to thank the consultee
CMA and CMB	Roebuck	Stevenage Liberal Democrats	We have no objections to the review's recommendations.	No comments other than to thank the consultee
CKA, CKB and CKC	Shephall	Stevenage Liberal Democrats	We welcome the addition of a new Polling District CKC with the new Polling Station at Grace Church Community Hall. This will give residents living in the new Polling District an option of a Station that is located closer to their homes.	No comments other than to thank the consultee

CDA, CDB, CDC, CDD and CDE	St Nicholas	Stevenage Liberal Democrats	<p>We object to the Council's proposed changes and believe serious consideration should be given to the usage of St Nicholas Recreation Centre as a Polling Station for both CCC in Woodfield and suitable Polling Districts in St Nicholas Ward such as CDC, CDE and CDD.</p> <p>For many in CDC, CDE and CDD, it is a considerable distance to travel to St Nicholas Community Centre and believe that it would be more convenient for residents and a better utilisation of resources at St Nicholas Recreation Centre to use it for multiple Polling Districts.</p> <p>Whilst not strictly within the ward boundaries, the proximity of St Nicholas Recreation Centre to St Nicholas ward has meant that it has been used very successfully as a Polling Station for many years. It seems illogical and arbitrary to amend this for the sake of a few meters. We will not be serving our residents properly if the Council's changes are to be implemented.</p>	<p>Response advises that allocating two different Borough Ward elections to a polling venue would present significant administrative problems for the Returning Officer at an election. It would create logistical problems for the staff, create confusion for the electorate, and also have significant legal implications around attendance at the polling station.</p> <p>The basis of the proposals is to ensure that the polling places and polling stations are within the Polling District and Ward, thus adhering to the guidance on the allocation of Polling District and Polling Places. St Nicholas Recreation Centre is within Polling District CCC which is within Woodfield Ward. For voters in Polling Districts CDC, CDD and CDE, St Nicholas Community Centre is a similar distance to travel to St Nicholas Recreation Centre and therefore these arrangements do not present any significant difference in respect of distance or travel.</p>
CAA, CAB and	Symonds Green	Stevenage Liberal Democrats	We have no objections to the review's recommendations.	No comments other than to thank the consultee



CAC				
CAC	Symonds Green	Ref: SBC004	<p>I read the article in the comet which encouraged people to raise any issues with polling stations.</p> <p>The only one I have is why Woolenwick Juniors School is used as one when there is another one barely 200 yards away at Symonds Green Community centre?</p> <p>It causes disruption to the school day and also any evening events going on there have to be cancelled.</p> <p>It would make more sense just to use the community centre alone.</p>	<p>Response advises that the buildings are almost a mile away in walking distance and that Woolenwick Junior School does not close on Polling Day. It further advises that the proposals adhere to the guidance on the allocation of Polling Districts and Polling Places, which includes the polling places and polling stations being within the Polling District and Ward. Woolenwick Junior School is within Polling District CAC.</p>
CCB	Woodfield	Councillor Sharon Taylor, Leader of Stevenage Borough Council	<p>I could not support the polling station at Weston Road cemetery. I know our residents felt very strongly that this was disrespectful</p>	<p>Response will advise that the allocation of polling stations is outside of the scope of this review and that it is the Returning Officer who is responsible for selecting polling stations.</p> <p>It will further explain that many different types of buildings are used as polling stations across the UK, including churches, cemeteries, schools and public houses, and that the polling station previously used for this polling district was Canterbury Way Park Pavilion, which has now closed. The building has now been used for both a local and national poll, and at the most recent</p>

				<p>European Parliamentary election the Returning Officer did not receive any negative comments in respect of its use as a polling station.</p> <p>Through the review process none of the comments received have suggested an alternative venue that is available for use as a polling station, therefore the area is limited to the Cemetery building being the only viable polling station available. For those who do find accessing the polling station an issue, absent voting arrangements are available, such as a postal or proxy voting. Absent voting information will be included in materials sent prior to an election.</p> <p>In so far as the review is concerned the Polling Place will be designated as the Polling District. On this basis should an alternative venue be identified at any stage within the Polling District after this review and prior to any election, it would be possible to use this as a polling station should it be considered appropriate.</p>
CCB	Woodfield	Ref: SBC005	As per the review taking place of locations of voting locations I would like to object to the Weston Road cemetery being used for	Response will advise that the allocation of polling stations is

			<p>this purpose</p> <p>I do not feel the location is fitting for this and in the event public are there for a quiet time of contemplation after losing someone or even just a regular visit they should not be faced with this taking place</p>	<p>outside of the scope of this review and that it is the Returning Officer who is responsible for selecting polling stations.</p> <p>It will further explain that many different types of buildings are used as polling stations across the UK, including churches, cemeteries, schools and public houses, and that the polling station previously used for this polling district was Canterbury Way Park Pavilion, which has now closed. The building has now been used for both a local and national poll, and at the most recent European Parliamentary election the Returning Officer did not receive any negative comments in respect of its use as a polling station.</p> <p>Through the review process none of the comments received have suggested an alternative venue that is available for use as a polling station, therefore the area is limited to the Cemetery building being the only viable polling station available. For those who do find accessing the polling station an issue, absent voting arrangements are available, such as a postal or proxy voting. Absent voting information will be</p>
--	--	--	---	--

				<p>included in materials sent prior to an election.</p> <p>In so far as the review is concerned the Polling Place will be designated as the Polling District. On this basis should an alternative venue be identified at any stage within the Polling District after this review and prior to any election, it would be possible to use this as a polling station should it be considered appropriate.</p>
CCB	Woodfield	Ref: SBC006	<p>I do not believe that the use of a cemetery (Woodfield Ward) is an appropriate venue for a polling station. It is a serene space for grieving families to say goodbye and to remember their loved ones and I find it quite disrespectful for it to be used as a political venue. Please reconsider.</p>	<p>Response will advise that the allocation of polling stations is outside of the scope of this review and that it is the Returning Officer who is responsible for selecting polling stations.</p> <p>It will further explain that many different types of buildings are used as polling stations across the UK, including churches, cemeteries, schools and public houses, and that the polling station previously used for this polling district was Canterbury Way Park Pavilion, which has now closed. The building has now been used for both a local and national poll, and at the most recent European Parliamentary election the</p>

				<p>Returning Officer did not receive any negative comments in respect of its use as a polling station.</p> <p>Through the review process none of the comments received have suggested an alternative venue that is available for use as a polling station, therefore the area is limited to the Cemetery building being the only viable polling station available. For those who do find accessing the polling station an issue, absent voting arrangements are available, such as a postal or proxy voting. Absent voting information will be included in materials sent prior to an election.</p> <p>In so far as the review is concerned the Polling Place will be designated as the Polling District. On this basis should an alternative venue be identified at any stage within the Polling District after this review and prior to any election, it would be possible to use this as a polling station should it be considered appropriate.</p>
CCB	Woodfield	Ref: SBC007	I wish to object to the proposed inclusion of the Weston Road Cemetery as an Envisaged Polling Station for the next scheduled election in the Woodfield ward.	Response will advise that the allocation of polling stations is outside of the scope of this review

			<p>Having stood as the Labour candidate for Woodfield in the SBC elections in 2012, 2014, 2015, 2016, and 2019 I have a close relationship with the electorate of this ward. Until this year, there were two polling stations used in Woodfield for elections; the Emergency Service Academy on Hitchin Road and the St Nicholas Recreation Centre on Pilgrims Way. In this year's local elections the latter polling station was replaced by Weston Road Cemetery. Whilst campaigning on the doorstep I received a number of complaints from residents who had been advised that they would need to cast their vote at the Cemetery. A number of reasons were given for this:</p> <ul style="list-style-type: none"> <li>• It is felt that a cemetery is an inappropriate place for political activity</li> <li>• The use of a cemetery as a polling station was considered to be disrespectful, both to the dead and mourners</li> <li>• Many voters were concerned about arriving at the polling station at the same time as a funeral was taking place</li> <li>• Safety issues on accessing the site</li> </ul> <p>The seriousness of this last point cannot be overemphasised. Not all voters have access to their own road transport. The Weston Road Cemetery is situated on a length of road which has no footpath. It is also one of the few stretches of road in Stevenage which is subject to the national speed limit. As a result, anyone wishing to access the site on foot has to walk along a narrow carriageway alongside traffic travelling at speeds of up to 60mph (although there are 20mph advisory signs at the blind bends, this limit is not mandatory).</p> <p>As a result of the above, a number of residents advised me that they would not be exercising their right to vote. This was a particular concern amongst the elderly and disabled. The Conservative and Liberal Democrat candidates experienced similar conversations.</p>	<p>and that it is the Returning Officer who is responsible for selecting polling stations.</p> <p>It will further explain that many different types of buildings are used as polling stations across the UK, including churches, cemeteries, schools and public houses, and that the polling station previously used for this polling district was Canterbury Way Park Pavilion, which has now closed. The building has now been used for both a local and national poll, and at the most recent European Parliamentary election the Returning Officer did not receive any negative comments in respect of its use as a polling station.</p> <p>Through the review process none of the comments received have suggested an alternative venue that is available for use as a polling station, therefore the area is limited to the Cemetery building being the only viable polling station available. For those who do find accessing the polling station an issue, absent voting arrangements are available, such as a postal or proxy voting. Absent voting information will be included in materials sent prior to an</p>
--	--	--	---	---

			<p>Democracy will be denied to a number of potential voters if Weston Road Cemetery continues to be used as a polling station. This cannot be allowed to happen.</p>	<p>election.</p> <p>In so far as the review is concerned the Polling Place will be designated as the Polling District. On this basis should an alternative venue be identified at any stage within the Polling District after this review and prior to any election, it would be possible to use this as a polling station should it be considered appropriate.</p>
CCA, CCB and CCC	Woodfield	Stevenage Liberal Democrats	<p>We welcome the addition of the new Polling District CCC and believe that this will be a better option for local residents within the area. However, this is subject to earlier comments that we believe that it is more than feasible for St Nicholas Recreation Centre to be used as a Polling Station for both CCC in Woodfield and suitable Polling Districts in St Nicholas Ward such as CDC, CDE and CDD.</p> <p>We have however received quite a few negative comments from local residents about the suitability of the Weston Road Cemetery as a Polling Station. These complaints can be split into two major objections; the appropriateness of using the Cemetery and lack of infrastructure.</p> <p>Many local people have said that they believe that the use of a cemetery as a Polling Station is not only disrespectful but also people feel uncomfortable visiting and using it as a Polling Station.</p> <p>The other objections relate to the transport infrastructure at the cemetery. The walking route to the cemetery is poor and needs to be improved if the building is to continue to be used as a Polling</p>	<p>Response will advise that the allocation of polling stations is outside of the scope of this review and that it is the Returning Officer who is responsible for selecting polling stations.</p> <p>It will further explain that many different types of buildings are used as polling stations across the UK, including churches, cemeteries, schools and public houses, and that the polling station previously used for this polling district was Canterbury Way Park Pavilion, which has now closed. The building has now been used for both a local and national poll, and at the most recent European Parliamentary election the Returning Officer did not receive any</p>

			<p>Station. Unless these objections are addressed, we feel that the cemetery remain an unsuitable Polling Station for local residents.</p>	<p>negative comments in respect of its use as a polling station.</p> <p>Through the review process none of the comments received have suggested an alternative venue that is available for use as a polling station, therefore the area is limited to the Cemetery building being the only viable polling station available. For those who do find accessing the polling station an issue, absent voting arrangements are available, such as a postal or proxy voting. Absent voting information will be included in materials sent prior to an election.</p> <p>In so far as the review is concerned the Polling Place will be designated as the Polling District. On this basis should an alternative venue be identified at any stage within the Polling District after this review and prior to any election, it would be possible to use this as a polling station should it be considered appropriate.</p>
--	--	--	--	--